

QUOTE

"Common sense is instinct, and enough of it is genius."

—Josh Billings.

# The Chelsea Standard

25¢

per copy

ONE HUNDRED-ELEVENTH YEAR—No. 39

CHELSEA, MICHIGAN, TUESDAY, MARCH 3, 1981

16 Pages This Week



**DISTRICT 12 SOLO AND ENSEMBLE WINNERS:** Saturday, Feb. 21, the Contemporaries travelled to Churchill High school to compete in the District 12 Solo and Ensemble. Performing two selections before an adjudicator, they were given a 1 rating, based on their intonation, tone quality, appearance and over-all musical performance. Nancy Heller and Marcia Warren also received a 1 on their duet. The

Contemporaries, under the direction of Tamara Barbret, include back row, left to right, Paula Halst, Anne Lewis, Joan Bart, Connie Dault, Monica vander Waard; front row, left to right, Margie Lewis, Marcia Warren, Kim Harvey, Amy Smith, Nancy Heller, Micky Bennett, Pris Drew, Melanie Schneider, Paula Beaudoin and, at the piano, Mrs. Tamara Barbret.

## Bulldog Cagers Win Final Home Contest, Host District Tourney

Tuesday night, the Chelsea Bulldogs ended their regular 1980-81 home basketball season on a pair of high notes. Not only did the cagers rack up their ninth win in 10 outings by defeating Mason, 60-52, but also senior Captain Jeff Dils hit the 1,000-point mark in his three-year career, a high school rarity. By the end of the evening, Dils had tallied 1,010 points in three years with the varsity cage team.

According to Coach Robin Raymond, "With about four minutes remaining in the first quarter, Jeff hit 1,000 points! At that time, we stopped the game and his teammates went out to congratulate him. It had to be the highlight of the game; it's quite an accomplishment for a high school student."

Dils, according to Raymond, was unaware that he was that close to 1,000 points and by the

end of the night, had hit 10 additional points. Besides fine scoring on Dils' part, he also assisted on nine scoring plays, passing better than in any other game during his three-year career, as far as his coach was concerned.

"He's been an outstanding player and he played a great game Tuesday, one of the best of his career," Coach Raymond commented.

Both Chelsea and Mason played evenly throughout the first half; tying the game after one quarter, 9-9, and again at the half, 23-23, before Chelsea took control. During the first half of the contest, Chelsea connected on 8 of 18 field goal attempts for 44 percent while the second half found the Bulldogs hitting 15 of 29 for a 10 percent increase which made the difference in the game. Though Mason proved to be a

(Continued on page five)

Chelsea's Bulldogs ended their 1980-81 basketball season with a loss to the Willow Run Flyers Friday night at Willow Run. Following a fairly close and slow-paced contest, the Flyers took over and defeated the Bulldogs, 62-42.

Regardless of the loss, Chelsea Coach Robin Raymond was "pleased with the Bulldog performance." At the end of the first quarter, the teams were tied at 10-all. "We followed our game plan and kept the game slow. We didn't let them run with the ball until late," explained Raymond.

By half-time, the Flyers were ahead 29-23 following two or three unintended fast breaks allowed by the Bulldogs. Otherwise, the game was played evenly up to this point.

In the third stanza, the Flyers outscored their opponents, 13-6, to take a 42-31 lead into the final eight minutes.

The Bulldogs were forced to run with the ball in the final period; they had to take a chance. But, with the speed; (Continued on page seven)

## Poljan, Osentoski Place 4th In State Wrestling Meet

Crisler Arena was filled with hundreds of prep wrestlers Friday and Saturday, Feb. 27 and 28, eager to participate in the state championships, in hopes of being ranked among the best in Michigan.

Two Chelsea wrestlers, Rick Poljan and Jeff Osentoski, were among the crowds of high school grapplers to take to the mats and emerge with fourth-place honors in their respective weight classes.

In the 112-lb. weight class, Osentoski was pinned in the second period by Rod Kemp of Alma Saturday, leaving Kemp with sole possession of third place in the state. Ironically, Osentoski had pinned Kemp the day before.

Rick Poljan, wrestling in the 198-lb. category, fell victim to his first loss Friday evening against Dave Bockheim of Grand Rapids Northview, a grappler with a 42-0 record. Defeating Poljan by a score of 10-6, Bockheim eventually took first place in the state at 198 lbs.

A second loss during the match to determine third and fourth placers dropped Poljan to fourth state-wide. In this contest, Steve Goff of Mt. Morris, took the Bulldog down, 9-6.

Nevertheless, with 10 wrestlers per weight class, Poljan and Osentoski fared extremely well. Both varsity coach Tom Fletke and JV coach Mike Young were "obviously very pleased" with their wrestlers.

In addition to the Chelsea efforts, six additional wrestlers in the Southeastern Conference placed at the 1980 state wrestling championships. At 105 lbs., Jack Huling of Milan took sixth followed by Jackson County Western's Brian Costo at 119 in sixth place. Jim Clement of Western also took sixth place at 126. Saline's Steve Hatfield, wrestling at 145 lbs., finished the day in third place



**COACHING CONGRATULATIONS:** Chelsea wrestling coach Tom Fletke, left, gives his state meet contenders, Jeff Osentoski and Rick Poljan, some words of encouragement at Crisler Arena during the Michigan state wrestling championships, Friday and Saturday, Feb. 27 and 28. Fletke's words of wisdom paid off; both Osentoski at 112 lbs. and Poljan at 198 lbs. ended their 1980-81 season in fourth place state-wide.

state-wide and Tom Rench of Western was sixth at 185.

The wrestling season, culminating with the state meet, draws to a competitive close though Chelsea's two coaches are

planning the formation of a freestyle club for all interested students in grades 6 through 12. For further information, contact either Coach Fletke or Coach Young.

## 2 Parties In Village Election

For the first time since the mid-Sixties, the annual village election will feature two political parties and eight candidates on the ballot vying for six offices.

Following last year's unsuccessful write-in campaign of incumbents and a sweeping victory by the novice Independents, former village trustee Walter Brown, established the Village Party, a political vehicle devised for the expressed purpose of offering interested parties the opportunity to run for Village office.

Chairing the party caucus Monday, Feb. 9, Brown and his cohorts nominated two persons for candidacy, Ishmael Picklesimer as trustee and Evelyn Rosentreter as clerk. Two trustee posts and two library board seats were left vacant by the Village Party.

According to Brown, the Village Party was not meant to do more than give the people of Chelsea the chance to seek political office. "Sticker or write-in campaigns are ineffective," he explained. "This year, with both parties on the ballot, it will be the people's choice."

At the Independent Party caucus, held Monday, Feb. 16, a full slate of candidates were nominated, comprising four incumbents and two newcomers. Seeking re-election are trustees Lyle Chriswell and John Popovich and library board members Pat Chriswell and Anne Belser. Novice candidates include Rosemary Harook, seeking the position of village clerk and Jerry Satterthwaite, vying for a vacant trustee seat.

(Continued on page five)

## C. of C. Elects Officers, Directors

Tuesday, Feb. 24, members of the newly established Chelsea Area Chamber of Commerce met to approve by-laws and elect a board of directors and officers.

Following the acceptance of the proposed by-laws, election of the board of directors took place. Elected to one-year terms were Bill Bott of Ann Arbor Trust, Sam Johnson of Gambles and Bill Rademacher, attorney. Two-year terms were given to Ron Olmstead, public relations director at Chelsea Community Hospital, Paul Schablie, executive vice-president at Chelsea State Bank and Jack Winans of Vogel's and Foster's. Three-year terms on the Chamber of Commerce board were taken by Dudley Holmes, Jr. of Chelsea Milling, Sandy Zeeb of Chelsea Greenhouse and Sheridan Springer of Springer Agency Insurance. Thereafter, these board members met to elect their officers who include Sheridan Springer, president; Sam Johnson, president-elect; and, Bill Bott, treasurer.

In the future, the Chelsea Area Chamber of Commerce board will have a luncheon meeting the

second Tuesday of each month. The next regular meeting of the organization will be Tuesday, March 10 where the process of expanding the chamber's membership will be taken into consideration. At the present time, 38 area businesses, manufacturers and professionals have joined the organization.

## Fire Dept. Has 4 Calls

Chelsea Fire Department made a total of four runs last week including two fires and two rescues.

Tuesday, Feb. 24, a rescue crew was dispatched to Main St. at 8:04 a.m. Later that morning, at 10:28 a.m., firemen were sent to the scene of an electrical fire on Flanders St. Then, Tuesday evening, a chimney fire sent Chelsea firemen to a Chestnut St. location. This call was received at 6:18 p.m.

Finally, Wednesday, a Chelsea rescue team was dispatched to a Hidden Valley Rd. residence to answer a rescue request.

## Girl Scout Week Starts Sunday

Beginning March 8, Girl Scouts across the United States will celebrate Girl Scout Week in honor of the 69th birthday of the organization.

In Chelsea, churches will recognize Brownies and Girl Scouts in their congregations and merchants will display posters and badge work created by local troops. Then, at 6 p.m. Sunday, March 8, 200 fathers and daughters will attend the annual Father and Daughter banquet with square dancing following. Music will be provided by the Luke Schablie Band.

During the week, the Huron Valley Girl Scout Council will conduct a new and unique invitation to join Girl Scouting. Newborn size undershirts will be presented to all baby girls born on Thursday, March 12, Girl Scouting's birthday. Chelsea Community Hospital will be participating in this activity. With the T-shirt will be an invitation to join Brownie Girl Scouting when the child becomes six years old. This is the first time such an ac-

(Continued on page three)



**KIWANIS FARMER'S SERVICE AWARD:** Bill Rademacher, left, presents Sylvester Weber with the 1981 Kiwanis Farmers Award during ceremonies at the Kiwanis Club's Farmers' Night Monday,

Feb. 23. For his numerous contributions to farming and the community, Weber gladly accepted his recognition as Kiwanis president Herman Koenn looks on.



Established 1871 **The Chelsea Standard** Telephone (313) 475-1371  
Walter P. and Helen May Leonard, Publishers  
USPS No. 101-720



Published every Tuesday at 300 N. Main Street, Chelsea Mich. 48118, and second class postage paid at Chelsea, Mich. under the Act of March 3, 1879. Postmaster: Send address changes to The Chelsea Standard 300 N. Main St., Chelsea, Mich. 48118.

#### Subscription Rates (Payable in Advance)

In Michigan: One year in advance ....\$8.00  
Six months .....\$4.50  
Single copies mailed ....\$ .50

Outside Michigan: One year in advance ....\$10.50  
Six months .....\$ 5.50  
Single copies mailed ....\$ .75

MEMBER  
**NATIONAL PAPER ASSOCIATION**  
Founded 1888

National Advertising Representative:  
**MICHIGAN NEWSPAPERS, INC.**  
257 Michigan Ave.  
East Lansing, Mich. 48823

### JUST REMINISCING

Items taken from the files of The Chelsea Standard

#### 4 Years Ago . . .

Thursday, March 10, 1977—

Chelsea High School Symphony Band members returned from the District 12 Band and Orchestra Festival at Ypsilanti High School, Ypsilanti, last Saturday with four 1's from each of four judges in four categories, a feat unmatched since 1968. A total of 76 students participate in the high school band program.

Chelsea village voters will go to the polls Monday, March 14, to fill the expiring terms of three village trustees, the village clerk, and two Library Board trustees. All candidates in the election were nominated by the Independent Party at a village caucus Feb. 14 and will run unopposed.

Beach school 8th grader, Kimberly Harvey, daughter of Mr. and Mrs. Richard Harvey of 14100 Harvey Rd., won the Beach Middle school spelling bee last week by correctly spelling the word, alimony. The contest is sponsored annually by The Detroit News to determine the best grade school speller in the Detroit Metropolitan area.

Unresolved issues of job security confronted Chrysler Corp. and UAW bargaining agents yesterday at a meeting in Detroit. The meeting was called in attempt to settle the week-long strike which has idled about 470 driver-mechanics, maintenance staff and stock crews at Chelsea's Chrysler Proving Grounds. Engineers and salaried administrative employees remain unaffected by the strike.

#### 14 Years Ago . . .

Thursday, March 16, 1967—

127 Chelsea voters cast ballots Monday in the 1967 village election, an event unmarked by either contest or controversy. Recent changes in state election laws, making it necessary for all candidates at the local level to run only as members of parties which appear on the state general election ballot, apparently caused only minor confusion at the polls. Because of the election law changes, the Independent Party was ineligible to appear on the

ballot and all candidates ran as Republicans or Democrats.

The Chelsea Fire Department elected officers Monday night. James Gaken was elected chief; Mac Packard, assistant chief; Art Paul, captain; LaVerne Haffey, first lieutenant; Dave Longworth, second lieutenant; Bud Hanked, secretary-treasurer; and Bob Dorer, trustee of the accident fund.

American Legionnaires of Herbert J. McKune Post No. 31 will join in a gigantic celebration of the Legion's and Auxiliary's 48th birthday during March with special festivities.

#### 24 Years Ago . . .

Thursday, March 14, 1957—

Donald Alber, People's Party candidate for village president, won the election by a majority of 69 votes over the Independent candidate, Leon Shutes, former village assessor. The total presidential vote was 326 for Alber and 257 for Shutes. Elected along with Alber was the full slate of People's Party candidates with the exception of Raymond Canine and Victor Kohman, who were seeking office as village trustees.

A total of 722 Chelsea school-age children took advantage of a county-wide immunization clinic held Friday. Of these, 67 received the triple diphtheria, tetanus and whooping cough inoculations; 505 the double booster shots for diphtheria and tetanus and 345 were vaccinated for smallpox.

#### 34 Years Ago . . .

Thursday, March 13, 1947—

With no one heading the Independent Party ticket and those allowing their names to remain on it not conducting a special campaign for election, voting at Monday's village election was rather light. A total of 391 votes were cast and the entire People's Party was elected by a large majority.

After a period of eight months, a package was delivered recently to Chelsea High school. It was the long awaited electric basketball scoreboard. It arrived on Feb. 21, just in time for the last home game of the season.

Don Barth and George Merkel have been nominated to receive the State Farmer degree by the Michigan Association of the Future Farmers of America. This is an honor that comes only to those who have developed strong farming programs and who have shown outstanding qualities of leadership.

## MICHIGAN MIRROR

By Warren M. Hoyt, Secretary, Michigan Press Association

#### Milliken Hopes To Avoid Budget Cuts Order Through Voluntary Cuts

The state's economy is not rebounding as was originally hoped and in hopes of avoiding a budget-cutting executive order to balance the current year's budget, Governor William G. Milliken is asking department directors to tighten their belts further and possibly make further layoffs.

In letters recently sent to all 19 agency heads, Milliken asked for a report on the new economy moves by March 2.

He did not give each department a target amount of savings it was expected to produce but simply asked each director to "redouble your efforts to reduce spending so as to maximize lapses."

Budget lapses are unspent appropriations returned to the general fund at the end of each fiscal year.

The governor sent the letters following a memo from Management and Budget Director Gerald Miller asking for an estimate of money that would be lapsed by each department at current levels of operation.

Milliken said the collective response of those estimates fell short of what is needed to balance the budget.

A spokesman for the Office of the Budget said the responses were so minimal, they weren't even totaled.

Tom Clay, director of the office, said current estimates (aside from new adjustments that might be required because of errant welfare projections) indicate general fund spending will exceed revenues by \$80 million.

Budget officials were hoping the lapse estimates would total about \$60 million, leaving a more manageable \$20 million deficit.

Clay said over the past decade lapses have always been at least \$60 million, but noted current conditions aren't historical.

He said the department director's estimates may have fallen so far short because it has been such a tight year already that they see few areas where money will be left over at the end of the year.

The governor's letter, which he said was an approach not taken before, is to make a more urgent appeal to the directors to re-look at their budgets and identify actions to cut spending.

In each letter, the governor suggested the additional budget cuts before any additional layoffs.

Milliken suggested the voluntary cuts would give the directors discretion and not cause the

disruption of an executive order budget cut and "the sometimes arbitrary impacts that would be imposed."

"I recognize that this request imposes a frustrating restraint on your efforts to carry out what we both understand to be the mission of your department, but I know you understand that if we do not take decisive action now, the alternative will be much more painful."

The governor will order the reductions following a review of the March 2 responses.

#### Welfare Figures Soar in January

Another bad sign of the time and things to come became evident when preliminary figures on the welfare caseloads for January show significant gains in both general assistance and aid to families with dependent children.

Figures for ADC show a tentative increase of 1,591 cases over December to a total of 242,700 and an increase of 2,572 cases in general assistance to a total of 103,000.

Social Services Director John Dempsey recently estimated the caseload bulge could add about \$10 million to the department's spending levels. As an alternative he suggested some cuts in grants.

#### K. of C. Plans Fish Fry Dinners

Attention fish lovers, the Chelsea Knights of Columbus Council No. 3092 will sponsor a series of fish fry dinners, every Friday evening, beginning March 6 and ending April 10, between the hours of 5:30 p.m. and 8 p.m.

The meals will be served at St. Mary's School, 400 Congdon St. Carry outs, beverages and desserts will be available and the Chelsea Knights of Columbus cordially invites the community to attend.

Telephone your club news to 475-1371



dancing & singing  
Telegrams  
-313-  
663-5788  
DANCE 'O GRAM

Yours truly,  
Uncle Lew.

### Uncle Lew from Lima Says:

#### DEAR MISTER EDITOR:

I've heard it said that if a politician can please 51 percent of the people 51 percent of the time he's doing good. Now I run across this poll that shows newspaper editors and preachers don't do that good. The study claimed editors are the most criticized people in America, preachers are next, with politicians running third, followed by lawyers, policemen and teachers. The way I figure, this is bad and good.

Natural, everybody in town knows he can put out a better paper than the one he's reading, and everybody will agree the only time a editor is pleasing everybody is when he's laying down on the job, with flowers all around him. The good news is that folks care enough to criticize. They want their news and they want it right. It's just as true that what most folks want is no preacher at all, so any preacher at all is bound to rub most of his flock the wrong way at one time or another. What's bad is that if politicians come in third it must mean folks have give up. If we don't blame the politicians for the shape this country is in, we must be like the baseball manager was about his shortstop. They got their positions so messed up nobody can play em.

I mentioned this poll during the session at the country store Saturday night, and the fellers give it mixed reviews. The kindest word come from Ed Doolittle that noted if it weren't for editors good and bad we wouldn't know how the politicians is doing. Another thing we wouldn't know, Ed went on, is that Uncle Sam has a strong challenger to see who can go in debt the most the fastest. Ed had saw where this feller in Utah had went bankrupt claiming he owed \$613 billion and had \$7,310 to pay his debts. Most claims agin him, Ed said, is in gold bonds on mines he don't have money to work. What the feller done, Ed went on, is borrow agin the future he ain't got, which sounds just like the way Uncle Sam has managed to git hisself \$940 billion in the hole and shooting for a trillion.

General speaking, the fellers give first place in the criticize poll to politicians. Bug Hookum said they git his vote for talking tax cut and budget cut and

## KITCHEN REMODELING



★ We at Dutch Country are kitchen remodeling specialists.  
★ Expert installation available.  
★ Free design layout service.

★ Featuring: HAND CRAFTED AMISH CABINETS.  
★ Distinctive "GOLDEN OAK CABINETS" By Continental.  
★ Jenn-Air Appliances ★ Delta Faucets ★ Elkay & Kohler Sinks.

VISIT OUR SHOWROOM

### DUTCH COUNTRY KITCHENS

146 E. Main 428-7292 Manchester

## DINNER-DANCE

WASHTENAW COUNTY MUTUAL AID

OPEN TO THE PUBLIC

Saturday, March 7 - 6:30 p.m.

\$10 per person

COCKTAILS - DINNER - DANCING

UAW HALL, 2795 S. M-52

South of I194, Exit 159

Tickets available through local fire departments

MUSIC BY THE RESEARCHERS

Subscribe to The Chelsea Standard



## Real Estate

By PAUL FRISINGER

REALTOR

### MATHEMATICS OF INSULATION

The oil boycott has resulted in huge savings to homeowners who have come to appreciate the value of conserving energy. The major source of energy conservation in the home is insulation. The dollar results can be staggering.

For example, one major gas company provides statistics that show that if just one percent of the 1.4 million un-insulated homes in their marketing area were equipped with adequate insulation, saving would be sufficient to heat 3,500 single family homes a year. By adding attic insulation to 5 un-insulated homes, enough energy can be saved to furnish all the energy needs to heat one additional home—20%.

What's the absolutely lowest cost home insulation/energy saving device? The window shade. The lowly window shade can save 21 cents of each dollar spent cooling an otherwise well-insulated home or apartment. Research by the Ill. Inst. of Technology found that an opaque shade mounted within a window frame admitted about 45% less heat than unshaded windows.

If there is anything we can do to help you in the field of real estate, please phone or drop in at FRISINGER REALTY CO., 935 S. Main St., Chelsea. Phone: 475-8881; evenings 475-2621. We're here to help!

### WEATHER

Forecast . . .  
Tuesday through Thursday partly cloudy. Lows in the teens. Highs in the lower 30s.

#### For the Record . . .

	Max.	Min.	Precip.
Tuesday, Feb. 24	41	31	Trace
Wednesday, Feb. 25	40	28	0.00
Thursday, Feb. 26	35	25	0.00
Friday, Feb. 27	40	25	Trace
Saturday, Feb. 28	45	30	Trace
Sunday, March 1	38	30	0.00
Monday, March 2	36	29	Trace

## Chelsea Cleaners



Ph. 475-1133

Judy & Warren McArthur  
Owners

Members: INTERNATIONAL FABRICARE INSTITUTE

### SPRING BRIDE ALERT

That beautiful wedding gown, whether it's your special creation or Grandmother's heirloom, demands attention to preserve its beauty for you to remember forever.

First of all, the gown should be cleaned immediately after the wedding day to ensure proper attention to any stains. Next, the gown must be carefully stored. Changes in temperature outside of the package will cause moisture to accumulate inside, and mildew will result if the gown is not properly packaged and stored. Airing the gown removes any moisture as it relieves the strain on the folds in the fabric. Leave everything to us . . . and you enjoy the honeymoon!

#### 3 LOCATIONS:

113 Park St., Chelsea (Main Plant)  
126 E. Main St., Manchester  
400 W. Michigan Ave., Grass Lake

### New in Town?

CALL  
426-8319

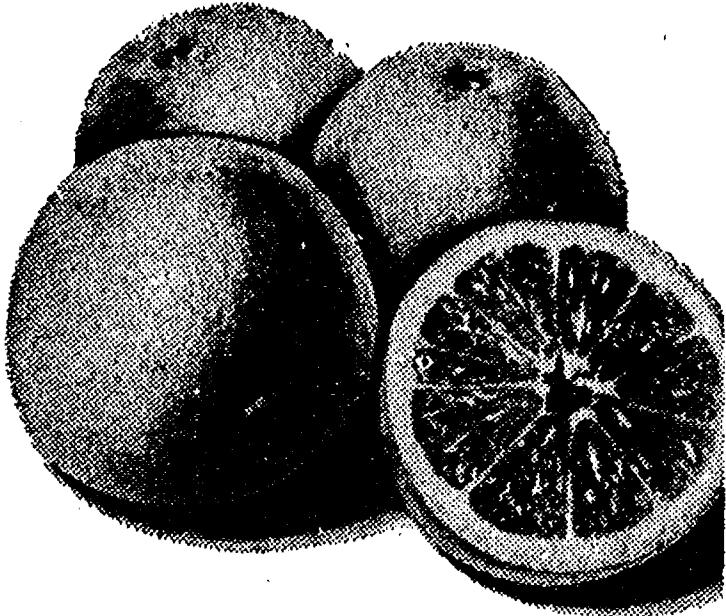
Our  
Welcome Wagon  
Hostess

Irene Henderson  
for

FREE GIFTS  
and  
INFORMATION



# 5th ANNUAL KIWANIS CITRUS FRUIT SALE!



Direct from the Groves in Sunny Florida

## Tree-Ripened Florida Citrus Fruit

Per Box

★ ORANGES . . . \$12.00

★ GRAPEFRUIT . . . \$10.00

(Pink - Seedless)

(A Box is 4/5 bushel)

You may order all oranges - all grapefruit, or mixed, half and half.

Five days before the citrus fruit is on your table it was hanging on a tree in sunny Florida. Truly fresh Florida citrus fruit.

### YOU CANNOT BUY THIS IN ANY STORE!

ORDER NOW! Receive the finest CITRUS FRUIT you have ever eaten . . . and help Kiwanis carry out their many community service projects.

### Place Orders With Any of the Following:

CHELSEA PRO HARDWARE  
HEYDLAUFF'S  
PALMER FORD  
STATE FARM INSURANCE  
FRISINGER REALTY

KUSTERER'S FOOD MARKET  
CHELSEA STATE BANK  
GROVE 5c to \$1 STORE  
THE CHELSEA STANDARD  
OR ANY CHELSEA KIWANIAN

ORDER NOW - DELIVERY APPROX. MARCH 20



## 'Beauty for Spring' is Theme for Modern Mothers

Modern Mothers Child Study Club met Tuesday, Feb. 24 at the home of Alice Stimpson. Co-hostesses for the evening were Pat Whitesall and Kathy Peterson.

"Beauty for Spring" was the theme for the two-part program. First, Fran Coy of Coy's Hairstylists offered a demonstration of proper make-up application and facial care. A fashion show, sponsored by Caren Johnson of Caren's Apparel, followed. Modeling spring fashions were Kay Farley, Kathy Peterson, Jan Grenier, June Wilson and Jeanine Riemenschneider. Several guests attended.

The next meeting will be held Tuesday, March 10.

## Donald Passow Granted Law Degree in Idaho

Former Chelsea area resident, Donald G. Passow, graduated from the University of Idaho School of Law last December, following the completion of all requirements necessary to obtain his juris doctor degree.

A 1969 graduate of Chelsea High school, Passow received his bachelor's degree in business finance from the University of Idaho at Moscow in 1978. He and his wife, the former Debra Stinehelfer of Chelsea, have resided in Idaho for five years.

Passow intends to open a private law practice in the St. Mary's, Id. area.

He is the son of Donald and Phyllis Passow of Cavanaugh Lake and the grandson of Mildred Hopper of Cavanaugh Lake and Ruby Passow of Ann Arbor.

## CAROL'S CUTS

40 CHESTNUT

Monday, Wednesday and Friday  
475-7094

Appts. Only

9:30 a.m. - 3:00 p.m.



MODERN MOTHERS FASHION SHOW: Chelsea Modern Mothers Child Study Club enjoyed a preview of spring fashion at the Tuesday, Feb. 24 meeting. Modeling the clothing are members, left to

right, Jeanine Riemenschneider, Jan Greniere, Kay Farley, June Wilson and Kathy Peterson.

## Woman's Club Members Hear Early 'History of Chelsea'

The Woman's Club of Chelsea met on Tuesday, Feb. 24 at the McKune Memorial Library club room. The program for the evening was "History of Chelsea," presented by club member Edith Hoffman.

The program was illustrated with pictures of the founding fathers which included the Pierce brothers, the Congdon brothers and the Glazier family, all of whom contributed greatly to the development of the Village of Chelsea.

In 1831, the area which is now Chelsea was a combination of three small hamlets, Pierceville, Kedron and Sylvan Center. The entire area was covered with large oak trees. When the railroad came through in the 1840's, the hill rising from the railroad track on Main St. up to Middle St. was considered one of the most dangerous in the area, by horse and buggy travelers.

The Pierce brothers who founded Pierceville owned more than 600 acres of land in the area of Old US-12 and Main St., during the 1830's. Both men were in the Michigan Legislature, located in Detroit. Nathan Pierce was called "Old Boots" by his fellow legislative members; he had a habit of taking his boots off before entering the legislative chambers. He also started the first cemetery when a traveler from Chicago was stricken with cholera when staying at his home. A monument to Nathan Pierce may be seen in this grave plot on Old Manchester Rd.

Elisah and James Congdon came to this area in 1833. Elisah, another member of legislature, was responsible for naming the Village of Chelsea. Once the village was established, people from Pierceville and Sylvan Center moved into town, bringing their various trades with them.

In 1850, the village was plotted, mostly north of the railroad station. Merchants had to travel to Detroit for their stock. In 1853, 17 families lived in Chelsea, a total population of 63 of which 21 were children. In 1844, the first school was built on Main St.

The Glazier family figures prominently in Chelsea history. George Glazier started the first bank in 1870. His son, Frank, built the Glazier Stove Works where kerosene stoves were manufactured and called the "brightest and the best." Frank Glazier also built many buildings that are landmarks of the town. These include the Clock Tower, the present Chelsea Standard building, the Methodist Home, the present court building and the Methodist church. He was ahead of his time, building a recreation building for his employees. This structure included a swimming pool.

Edith Hoffman's program was both informative and interesting. Hostesses for the evening were Joyce Vogel and Lila Paulowski. Anyone interested in joining the Woman's Club of Chelsea should contact chairperson Jo Spade, membership committee at 475-1892.

Volunteers gave nearly 10 million hours of service to veterans last year at Veterans Administration medical centers. Each month they made some 78,000 visits to veterans in VA health care facilities.

## Letters to the Editor

On Wednesday, Feb. 18, 11 Big Brothers accompanied by Tom Carl, counselor and myself, joined their Little Brothers at St. Louis School for Exceptional Boys. Objective, sharing in the joy of basketball, where the "home" team won. Each team was equally balanced by St. Louis school, and the Cassidy Lake representatives. All students and their counselors came to the gym to cheer their fellow teammates on to victory! Cheer they did!

After the main event, there was a game between the boys of St. Louis and team from Cassidy Lake. To the surprise of most present, St. Louis school team gave a performance that won them the game. Big Brothers... "eat your hearts out." Refreshments provided by Fr. Salvatore, and the kitchen personnel (thanks Sr. Lucy), really hit the spot after all the work-out. Delayed Valentines, very simply made by the inmates of Cassidy Lake, were handed to each boy at the school with the help of Brother Dean, who was also the game's referee.

We all took ourselves to the newly renovated Chapel, at St. Louis school, where Brother Dean joined us in a song that says it all, "They Will Know We Are Christians By Our Love." Fr. Salvatore led a prayer and it was again time to go.

In March we hope to have a rematch on the gym floor... and the Cassidy Lake men will practice harder for this one!

There is a footnote here which gives me great pride to share. After the weather of the past couple of weeks delayed the presentation of home-made Valentines to 212 residents at the Methodist Home, it did come to be. The Valentines were created by the men at Cassidy. Not a Hallmark vintage, but even more precious, because it came from "Heart to Heart"... to folks who may never know each other personally, but share and understand loneliness. These are the rewarding moments for me, as acting Catholic Chaplain.

Mrs. Millie Warner.

The labor force participation rates of women ages 25 to 34 increased 19 percentage points between 1970 and 1979, according to a publication of the Women's Bureau of the U. S. Department of Labor.

Dear Editor:

Feb. 21, 1980, during a school musical rehearsal, our director's purse was robbed. The money stolen totaled over \$200 in cash and checks. After the Chelsea Police recovered the checks and money, the checks were soon returned. But over \$100 in cash still remains in the hands of the Washtenaw County Sheriff's Department to be used as evidence in the trial of the three youths who allegedly stole the money.

In October of 1980, I contacted "Action Please" through the Ann Arbor News, since our director was making no headway in securing the return of her money. "Action Please" stated that, "the case is before juvenile court, but efforts are being made to try the youth as adults. Delaying the whole process is the fact that the Public Defender assigned to the three youths disappeared. A new public defender had to be appointed."

That was five months ago. No contact has been made with the director to inform her of trial dates or any complications that may have set in since February of 1980. She has no idea whether she will see this money again, let alone where it is now. "Action Please!" had also stated that once the trial begins, lawyers could agree to release the money. Why wasn't the director informed if and when the trial began?

Communication lines between the public officials and robbery victims have to be kept open. Why should victims of crimes have to be put through legal tie-ups without being made aware that they exist?

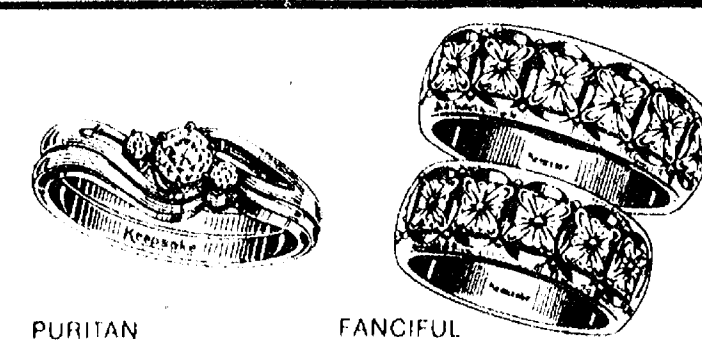
Paula Haist.

## CHS Class of '76 Making Plans for 5-Year Reunion

The Chelsea High school Class of '76 will be planning its five year reunion, Tuesday evening, March 10 at 8 p.m. in the high school cafeteria. All class members are welcome to join in the discussion of location, times and activities for the get-together.

Participants are asked to bring suggestions and ideas. For further information, contact Suzanne Morrison at 475-9830.

## Keepsake Perfect Symbols of Love



See our Keepsake diamond engagement rings and matching 14 Karat gold wedding rings, in traditional and contemporary styles: yellow, white and two-tone gold, matched sets and trios.

Keepsake®

## Winans Jewelry

Rings from \$200 to \$10,000

Trade-Mark Reg.

## Guest Speaker Tells ABWA Members Importance of Car Care

Twenty-three members and five guests met at Schumm's last week for the February meeting of the Chelsea Charter Chapter of the American Business Women's Association. The invocation was given by Pat Shaw.

During the business meeting, Shirley Schneider, chapter president, announced the following special committee activities. The March meeting for prospective new members will be held at the home of Maxine Kishmaul. The Business Associate night is April 28. Letters nominating a Business Associate must be turned in at the March meeting. Scholarship application forms are available from the Education Chairman, Betty Koch. Flower Show chairman Shirley Porter announced that the show will be held at Sylvan Town Hall, May 2. The theme scheduled is "Signs of Spring."

Guest speaker, Marti Knaggs was introduced by Linda Ormsby, program chairman. Ms. Knaggs works with the Institute of Social Research in the area of energy conservation. She told members how fuel supplements and maintenance affect the performance of a car. She explained how condensation can cause water in the fuel tank and fuel line, causing gas line freezing. Temperature changes can also cause water in gasoline. She also explained how carbon builds up on the spark plugs and varnish can also add to poor performance in a car.

In closing, she emphasized the importance of good car care to save time spent in breakdowns as well as repair bills. A question and answer period followed her talk.

Joan Vandegrift, vocational speaker, told about her duties as nurse at St. Louis School. She is

the only registered nurse at the school and, because of limited funds, her service hours per day are limited. Fifty boys are housed at the school operated by a Latin religious order. She told members of the University Hospital Family Practice Center physicians, Snyder, Burns and Hawks served the medical, dental and ophthalmological needs of the students. She enjoys her work and explained that it is a very rewarding occupation.

Guests were Karen Cole, Marian Centofanti, Jeanette Schneider and Pat Stoll.

The benediction was read by Judy Moisan.

## Girl Scout Week

(Continued from page one)

tivity has been tried by the Hurgh Valley council and it is anticipated that the program will be well received by both parents and community. The T-shirt will be silkscreened with a large baby rattle on it. The ball of the rattle will read, "Future Girl Scout."

Subscribe today to The Standard.

## MARGIE'S UPHOLSTERY

FREE ESTIMATES

- Large Selection of Materials
- Upholstery Supplies
- Repair Service

Pick-Up and Delivery Available

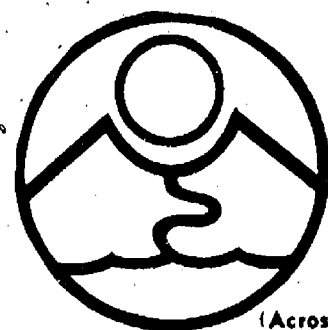
MARJORIE SMITH

Ph. 1 (517) 536-4230

Call Collect between 8 a.m.-6 p.m. Monday thru Saturday,

6245 Brooklyn Rd., Napoleon

## WHOLE WHEAT HAMBURGER BUNS & WHOLE WHEAT HOT DOG BUNS



RIVENELL  
NATURAL  
FOODS  
3212 ALPINE  
DEXTER, MICH 48130  
426-2549  
(Across from the Farmers' Market)

## SPECIAL thru

Sat., March 14

20% OFF

on all

- ★ CORDUROYS
- ★ VELOURS
- ★ WOOLS
- ★ L. L. BEAN SHIRTING

100% Cotton

## COUNTRY CRAFTIQUE

HOURS: Mon.-Fri., 9:30 to 5:30. Sat., 9:30 to 5  
103 N. Main, Chelsea Ph. 475-2512

## SUNDAYS AT SCHULER'S...



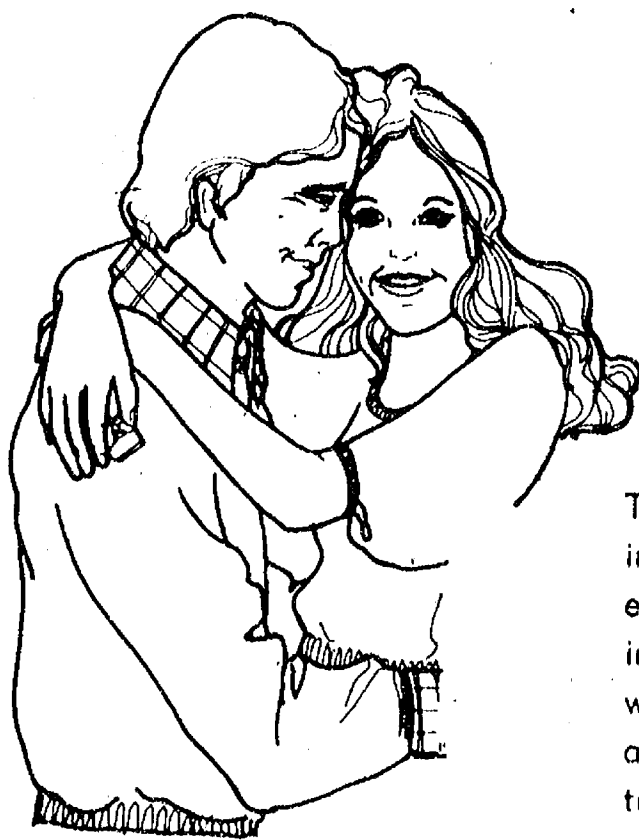
## BRING YOUR BUNCH TO BRUNCH!

This Sunday take the whole family to a delicious Win Schuler's brunch. It includes all your favorites that make Sunday a very special family day.

## Schuler's

ANN ARBOR  
US 23 & Plymouth Rd., in the Marriott Inn  
(313) 769-9400  
Brunch: 10 a.m.-2 p.m.

## Engaged?



Then you'll be thinking about wedding invitations. Let us show you the most exciting collection of wedding stationery in town! We can also help you plan your wedding, with gift ideas for your attendants, and a complete selection of reception items. Stop in and see us for your wedding needs.

## Dayspring Gifts

116 S. Main St., Chelsea

10% DISCOUNT on any printed order of invitations, response cards, announcements, thank you notes over \$100.





JEFF DILS leaps in hopes of hooking the ball through the net at Friday's 1980-81 grand finale game against the Flyers of Willow Run. Waiting under the net for a possible rebound is David Wojcik while Chris Tobin heads in from mid-court. Though Dils led the Bulldogs with 14 points, the Flyers clinched a 62-42 win.

Though Dils led the Bulldogs with 14 points, the Flyers clinched a 62-42 win.

## School Briefs Board

Present at a regular meeting of the Chelsea Board of Education Monday, Feb. 23, were Stirling, Feeney, Schumann, Snyder, Dils, Grau, Heller, Superintendent Van Meer, Assistant Superintendent Mills, Principals Williams, Benedict, Wojcik, Assistant Principal Vogel, Community Education Director Rogers, Athletic Director Nemeth, guests.

Meeting called to order at 8 p.m. by President James W. Stirling.

Board approved the minutes of the Feb. 2 meeting.

A letter from the CEA regarding parking lot liability was entered as an official communication.

A letter from Mr. and Mrs. Thomas Ritter, requesting waiver of the kindergarten birthdate requirement, was entered as an official communication.

A letter from Mrs. Carole Gallas, regarding transportation concerns, was entered as an official communication.

The Board was advised that since morning and afternoon supervision has been in effect at Beach Middle School bus transfer point, some of the problems are diminishing.

Kelth Gafner, high school agriculture instructor, reviewed course outlines and goals and objectives.

Assistant Principal Vogel reviewed first-semester attendance and discipline.

A letter from Western Michigan University, commending Kevin Miller and his students for a recent performance, was entered as an official communication.

Trustee Dils reported on the recent Civic Committee meeting.

Board convened in executive session to discuss a personnel matter.

Board convened in public session and subsequently adjourned at 11:37 p.m.



REHEARSALS have become a part of the daily life of the cast starring in the Chelsea High school spring musical, "Me and Juliet," under the direction of Tamara Barbret. Caught in the middle of a fight scene from the production are, left to

right, Marcia Warren, Jim Herter, Phil Powers, Kim Harvey, Mike Ward and Rick Eder. The finished product will be presented to the community later in March.

## 14th District Court Proceedings

Week of Feb. 23-27

Judge Kenneth Bronson, presiding  
Thomas G. Webb was sentenced for three counts of driving under the influence of liquor to \$605 fines and costs, 60 days jail, credit time spent concurrent, continued AA, two years probation, no drinking and 60 days additional suspended, on each count.

Thomas W. Borne was sentenced for driving under the influence of liquor to completion of the Alcohol Education Program here or at Wyandotte General Hospital.

Gary M. Stanton pled guilty to violation of instructors permit. Fines and costs, \$35.

Matthew Morgan pled guilty to no valid operator's license on his person. Fines and costs, \$25.

Gregory Rutledge pled guilty to being a disorderly person. Sentenced to \$50 fines and costs and attendance at the Alcohol Education Program, suspended if joins the Armed Forces.

Monte L. Pullen was sentenced for impaired driving to \$300 fines and costs and four months proof of insurance or 15 days probation.

Laurence Koch was sentenced for reckless driving to \$100 fines

and costs and 10 days probation work program.

Laurence Koch was sentenced for driving with license suspended to 10 days probation work program. No fines or costs.

Paul Fitzpatrick was sentenced for impaired driving to attendance at the Alcohol Education Program and Human Behavior Classes, \$300 fines and costs or 15 days.

Thomas Allgood was sentenced for hit and run to \$225 fines and costs and attendance at the Defensive Driving School or 15 days.

Leo P. Flanagan was sentenced for impaired driving to \$225 fines and costs.

Sam Magro pled guilty to no valid operator's license on his person. Fines and costs, \$100.

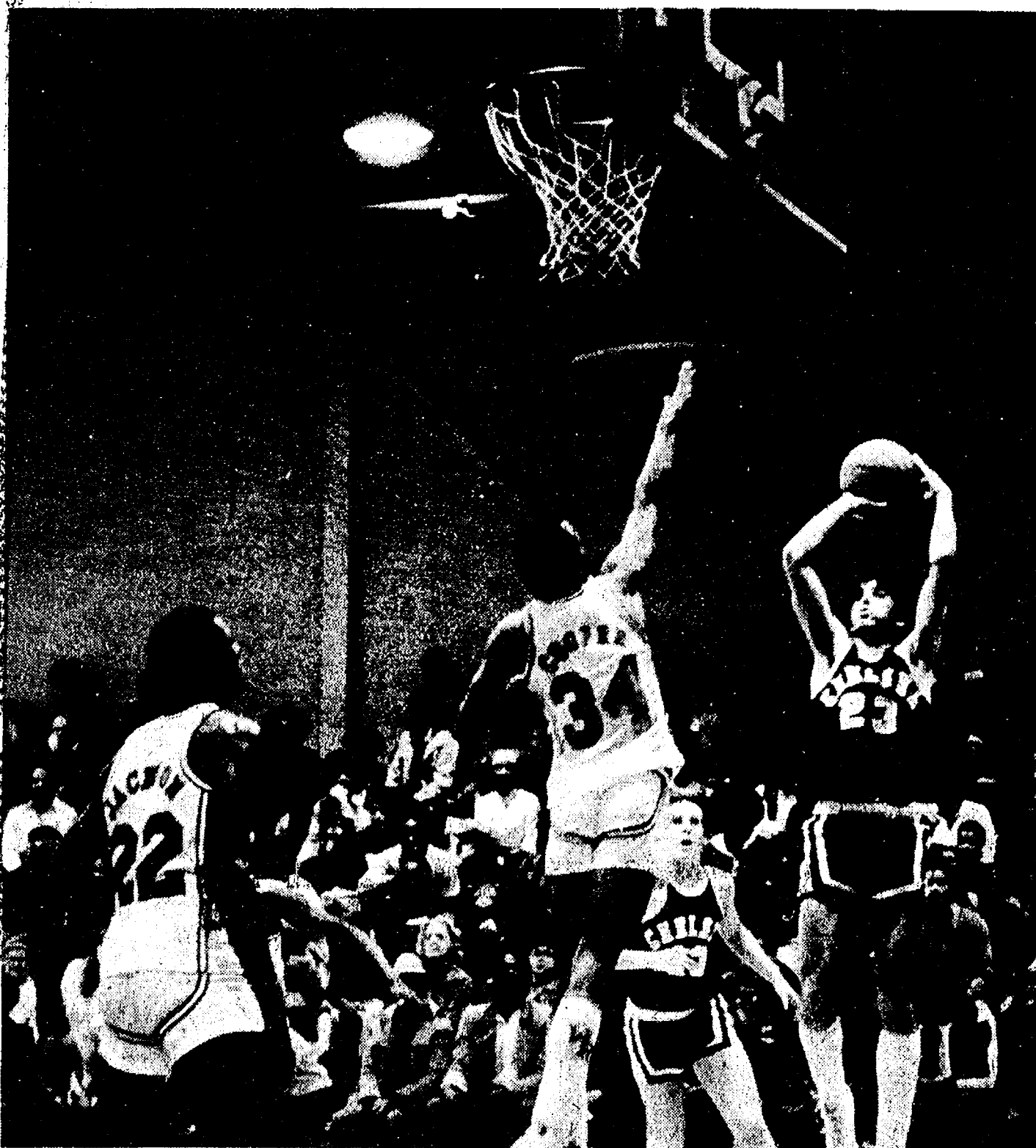
John C. McDonald, Jr. was sentenced for speeding 45/35 to costs of \$25.

Christopher Nuttle pled guilty to no valid operator's license on his person. Fines and costs, \$100.

James Kerner was sentenced on a bench warrant to pay fines and costs of a charge of leaving the scene of a property damage accident and attend Defensive Driving School. Pled not guilty on driving school and was sentenced to pay \$50 warrant fee and \$125 fines and costs due or 15 days.

Between 1970 and 1978, the number of women working part time in managerial and administrative jobs grew by 59 percent, from 164,000 to 261,000, according to a publication of the U.S. Department of Labor entitled "Job Options for Women in the 80's."

**For Dependable  
Early Morning News  
Call for Delivery of  
THE DETROIT NEWS  
Ph. 971-6363**

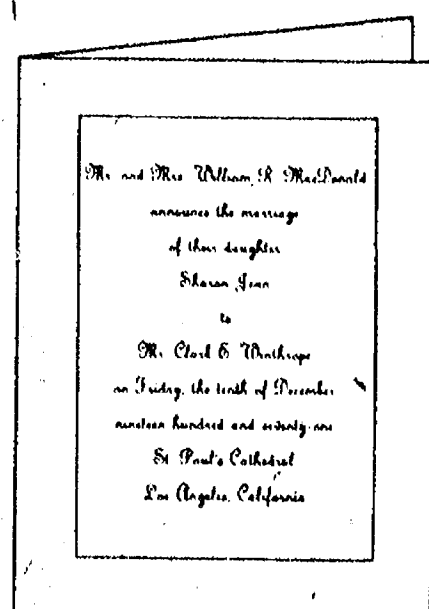


1,000 PLUS 1: Chelsea's Jeff Dils goes up for two during the season finale against Willow Run Friday night at Willow Run. Though the Bulldogs were successful in slowing the game down initial-

ly, the Flyers took control to defeat Chelsea, 62-42. Dils paced the Bulldogs with 14 points, to end his three-year regular season career with 1,024 points.

Our *Free Gift* for the Bride-To-Be with your order for *Wedding Invitations by Rytex*. Our gift of 50 Thank-You Informals with envelopes. So appropriate and socially correct for your many brief notes, and thank-yous. The Thank-You Informals are on damask-rich ivory paper with the "thank you" in embossed black script. There yours with any style of Wedding Invitation.

We invite the bride-to-be to examine the variety of traditional and contemporary Wedding Invitations with their accessory cards by Rytex. Special handling is available for faster service.



**The Chelsea Standard**

300 N. Main St., Chelsea

Phone 475-1371

## THE LOFT FRAME & ART GALLERY

107 1/2 S. MAIN ST., CHELSEA

Located between Vogel's & Foster's  
2nd Floor

**GRAND OPENING**  
**MONDAY**  
**MARCH 9th**

### ★ LIMITED EDITION PRINTS

by PAUL CALLE  
ROBERT BATEMAN  
DAVID WRIGHT  
and many others

### ★ CUSTOM FRAMING

150 frame samples  
to select from

**HOURS:** Monday thru Thursday ..... 10 a.m. to 6:00 p.m.  
Friday ..... 10 a.m. to 8:30 p.m.  
Saturday ..... 9 a.m. to 4:00 p.m.





KRAIG LEACH, diving into an 11th-place finish with a total of 224.90 points at the Chelsea Invitational, demonstrates some of his tumbling ability during Thursday's competition in a field of 10 teams. For his efforts, Leach qualified for the state meet, March 13 and 14.

## Bulldogs Win Over Mason, 60-52

(Continued from page one)

good, consistent team with a towering first string of players, Chelsea, per usual, controlled the momentum of the game, forcing the opponents to come to the ball and taking advantage of any mistakes the Mason cagers made. Turnover-wise, Mason was forced to commit 16 to Chelsea's seven.

The Bulldogs held a three-to-four-point lead throughout the second half, pulling away with an eight-point victory. Pacing the Chelsea cagers was Dils with 17 points and nine assists, while a trio of additional players also hit double figures. Chris Tobin, who played an exceptional fourth quarter by hitting five points and pulling down a number of crucial rebounds, ended the evening with 13 tallies, followed by Jon Riemenschneider with 12, David Wojcikl 10, Jeff Price, suffering from tendonitis, hit four points and Mark Steinaway and Mike Bareis with two points each.

From the free throw line, Chelsea hit 67 percent on the night by completing 14 in 18 attempts. Following the game, Chelsea hit its 70 percent season goal. Mason, on the other hand, connected for 71 percent on the evening, sinking 10 of 14. Mason also hit six more rebounds than did the Bulldogs, a total of 28 as opposed to 22 by the victors.

This victory upped Chelsea's season tally to 12-7 over-all as they prepared to take on an exceptional Willow Run team Friday night at the final regular season game. Beginning Monday, all area teams will begin district battle.

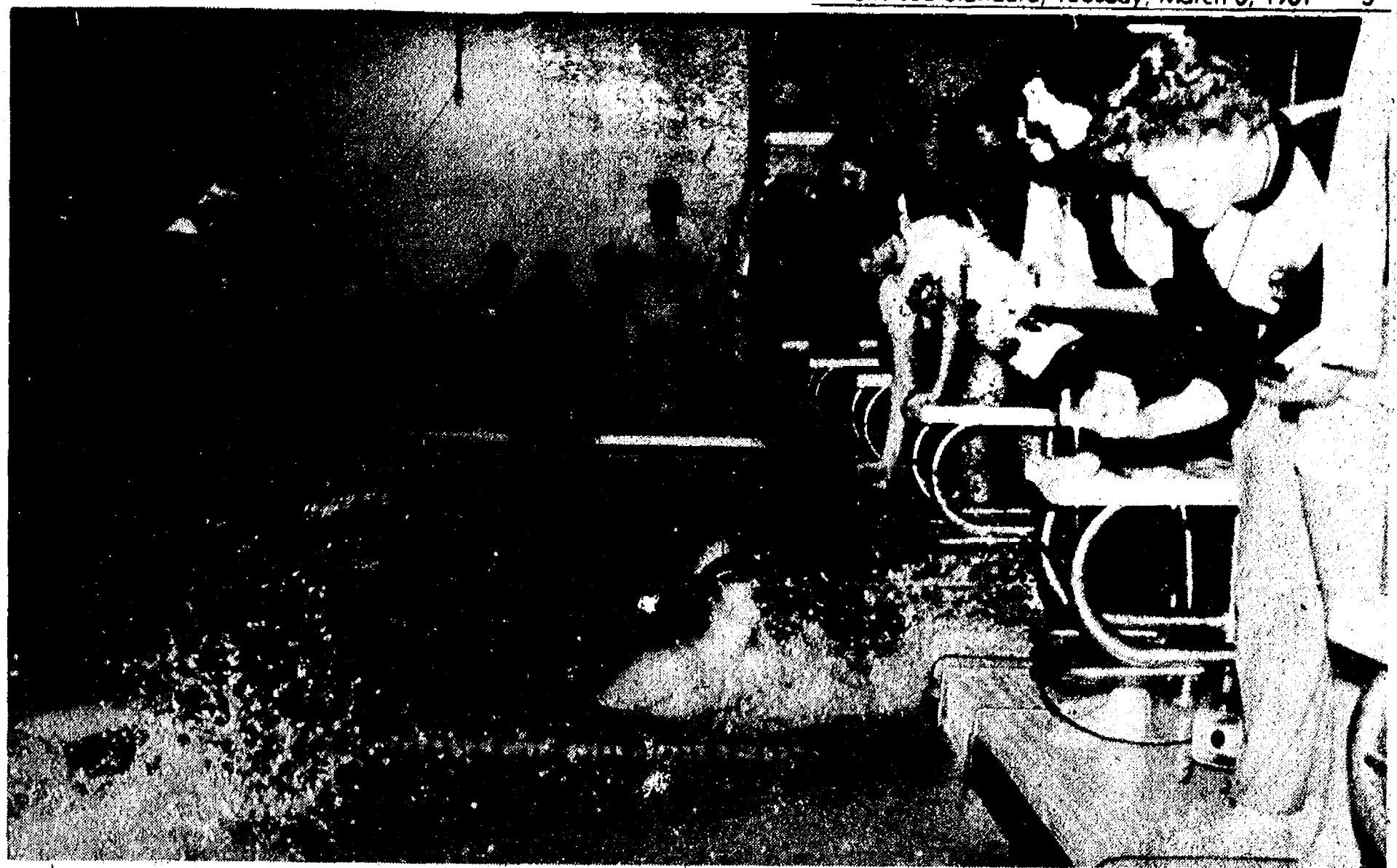
## John Hurd Named V-P AT WCC

Chelsea resident John Hurd, Dean of Business Operations at Washtenaw Community College, has been named Vice-President for Instruction and Student Services at the College. The appointment was made by the College's Board of Trustees at a meeting held Tuesday, Feb. 24.

Hurd's appointment to the newly created office comes as part of the College's effort to refine the administrative structure of the institution to better serve student and community needs.

Hurd, former controller for Washtenaw county and chief financial officer for all accounting functions, computer services, plant operations, construction projects, security, purchasing, planning and development, institutional research and auxiliary service activities at the College, has an academic background which includes teaching experiences and co-ordinating roles at Eastern Michigan University, University of Wisconsin, Cleary College and Madison Area Technical College.

He resides at 16360 Roe Rd.



LIFE-TIME BEST of :25.6 Chelsea's Kent Noll recorded a life-time best, winning this 50-yard freestyle heat with a time of :25.6 at Thursday's Chelsea Invitational. With his efforts, the Bulldog tankers

swam their way into a meet record 370 points, thereby taking first and remaining undefeated at home for three years.

## 2 Parties In Village Election

(Continued from page one)

Both parties, Village and Independent, seek to promote progressive, controlled growth in the community. Both support the planning commission. Disagreements in political ideas are not the basis of either party's existence. Though each party hopes to elect all of its nominees, the basic idea behind the 1981 village election is choice, pure and simple.

That choice will be made next Monday, March 9 as eligible village electors converge on the polls to cast their ballots.

Please Notify Us of Any Change in Address

## New Air Force Recruiter Named

Staff Sergeant Larry F. Howen, is the new U. S. Air Force Recruiter for Washtenaw county. Sgt. Howen, whose office is at 2500 Packard, Suite 208, Ann Arbor, is a native of Trevor, Wis. He is married and the father of a

daughter, Carla, 9, and a son, Brian, 4. His wife, Susan Kae, hails from Silver Lake, Wis.

Sgt. Howen is a six-year Air Force veteran, who has served in Germany, and various bases throughout the United States.

Recruiting office hours are from 8 a.m. to 6 p.m. Monday through Friday, and 9 a.m. to 1 p.m. on Saturdays, according to Sgt. Howen. Young men and women interested in learning about the opportunities available in the U. S. Air Force may visit him at his office, or call (313) 973-7702.

## STRECKER & CAREY, P.C.

### Certified Public Accountants

Services Provided in Following Areas:

- ★ AUDITING
- ★ INCOME TAX PREPARATION & CONSULTATION
- ★ ESTATES & TRUSTS
- ★ COMPILATIONS & REVIEWS
- ★ ACCOUNTING SERVICES
- ★ MANAGEMENT ADVISORY SERVICES

HOURS: 9 to 5 Monday thru Friday  
Evening and Saturday appointments available.

8124 MAIN ST. DEXTER  
PHONE 426-2522

## K. of C. FISH FRY DINNER

St. Mary's School  
400 Congdon St., Chelsea

FRIDAY NIGHTS 5:30 to 8 p.m.

MARCH 6th, 13th, 20th, 27th,  
APRIL 3rd, 10th

Adults \$3.50 Children 14 and under \$2.50  
Carry-Outs, Beverages & Desserts Available  
ALL ARE WELCOME

**COMING SOON!**  
**All You Can Eat SALAD BAR**  
at your **Dairy Queen**  
901 S. Main St., Chelsea

## Jiffy market

Big Enough To

Serve You . . . Small Enough To Know You!

Corner of Sibley and Werkner Rds. - Chelsea, Michigan 48118

PHONE 475-1701

Sale Prices Effective March 3 thru March 7

## U.S.D.A. CHOICE BEEF STEAK



**ROUND STEAK**

**\$2.19 lb.**

Full Cut

CLUB STEAK ..... lb. **\$3.89**  
T-BONE STEAK ..... lb. **\$3.99**  
SIRLOIN STEAK ..... lb. **\$3.09**  
Porterhouse Steak ..... lb. **\$3.99**  
RIB STEAK ..... lb. **\$3.09**

FRESH GRADE A LARGE

**EGGS**

doz. **69¢**

HOSTESS

**FRUIT PIES**

3 4 1/2-Oz Pies **\$1**

ECKRICH

**SMOK-Y-LINKS**

10-Oz. Package **\$1.29**

**FRESH CABBAGE**

**12¢ lb.**

KLEEN-MAID

**WHITE BREAD**

1-Lb., 4-Oz. Loaf **49¢**

FARM MAID HOMOGENIZED

**MILK**

gal. **\$1.98**

## FARM MAID SPECIALS

**LOW-FAT MILK**

gal. **\$1.69**

**COTTAGE CHEESE**

1-Lb. Crtn. **83¢**

**SOUR CREAM**

pint **79¢**

**CHIP DIP**

1/2 gal. **39¢**

## JIFFY MEAT SERVICE

CUSTOM CUTTING, WRAPPING, FREEZING.  
QUICK SERVICE ON BUTCHERING —  
YOUR BEEF OR OURS.

- ★ U.S.D.A. CHOICE SIDES OF BEEF
- ★ FRONTS - HINDS - WHOLE RIB - WHOLE LOINS
- ★ LOCAL FARM CORN-FED BEEF AVAILABLE.

## PEPSI-COLA

1-LITRE BOTTLES

**8 pac \$2.25**

Plus Deposit

Open With Complete Service, 7 Days A Week

TOP VALUE FOODS **7 a.m. MORNING to 10 p.m. NIGHTS**

Sale Prices March 3 thru March 7



## Cagers of the Week



**JUNIOR JOHN WELTON**, left, is currently enjoying his first year on the Chelsea High school varsity basketball team. As a 5' 11" guard, "Welton's strongest asset," according to Coach Robin Raymond, "is his ball handling ability. He's gone in during tough situations and has played extremely well," commented Raymond. "With his continued improvement, he'll play good basketball during his senior year." In the off-season, Welton is a member of both the baseball and golf teams at Chelsea High.

**RANDY KRICHBAUM** is a 6'1½" sophomore playing his first year of varsity basketball with the Chelsea Bulldogs. A fundamentally strong player, Krichbaum, as he becomes more assertive and more aggressive, will be a big contributor in the 1981-82 season. A good jumper who does most things well, he has and will continue to be a good player on next year's Bulldog squad.

### SEC ROUND-UP:

## Dexter Wins Two Last Week To Close Season

### Dexter 76, Hartland 52

A red hot Dreadnaught attack led to the trouncing of Hartland Tuesday night in a non-conference encounter at Dexter. The home team scored 17 points in its first 10 ball possessions and held a convincing 21-10 first quarter lead.

The Dreadnaughts held a 46-22 half-time lead and 10 Dexter cagers were able to score in the half. Heading into the final stanza, Dexter was ahead, 64-32, but Hartland, in a last effort, outscored the Dreadnaughts, 20-12, in the quarter.

Pacing the victors was Chris Rutkowski with 16 points while leading scorer Rob Ianni was held to 12. The win upped the Dexter over-all slate to 9-10; Hartland fell to 6-13 on the season.

### Chelsea 60, Mason 52

Chelsea's Jeff Dils, scoring his 1,000th career point and exhibiting dazzling ball-handling abilities, edged the Bulldogs on to a 60-52 defeat of the Mason Bulldogs at Chelsea Tuesday night. The win, 17 points and nine assists of which were added by Dils, upped the Chelsea season slate to 12-7. Mason dropped to 7-11.

Both teams played evenly in the first half, tied at nine at the end of the first quarter and at 23 by intermission. But by the end of three, Chelsea took a three-point lead and coasted on to a non-league win. In addition to Dils, Chelsea sported three other players in the double figure scoring column including Tobin, Riemenschneider and Wojciecki.

### Lincoln 80, Pinckney 67

In a see-saw game Tuesday night, Pinckney rushed into a first quarter and half-time lead before the Lincoln Rallsplitter coach made some offensive adjustments that resulted in an 80-67 victory in the non-league match-up.

Lincoln took control in the third stanza and claimed a 57-48 advantage. The Rallsplitters were successful in holding the Pirates back in the final eight minutes.

Pacing the victors was Doug Phillips with a game-high 23 points while Dave Stasiak and Dean Flucks scored 17 and 16, respectively. High scorer for the Pirates was Nick Monaster with 15. He was among four Pinckney cagers to hit double figures in the losing effort.

### Chelsea 42, Willow Run 62

Playing a slowdown game, Chelsea held off the Willow Run Flyers until late in the game Friday night, dropping the contest, 62-42. The loss left the Bulldogs with a 12-8 season slate.

Pacing the Bulldogs was Jeff Dils with 14 points, followed by Jon Riemenschneider, the only other Chelsea cager to hit double figures, with 10.

Following the first quarter, the game was tied, 10-10, but the Flyers raced to a 29-23 half-time lead and the Bulldogs never caught up.

With the assistance of Willow Run's Keith Jackson with 29 points, 11 rebounds, nine blocked shots, five assists and five steals, the Flyers moved up to 13 wins compared to only four losses on the season.

Both teams, in different districts, will begin their tournament play Tuesday night, Chelsea against Dexter and Willow Run against Carleton Airport.

### Dexter 56, J. C. Western 46

Closing out the season, Dexter was hosted by the Jackson County Western Panthers and defeated the hosts, 56-46 to up the Dreadnaught season record to 10-10 over-all and 4-8 in the Southeastern Conference.

A 29-16 half-time lead never relinquished and the Dreadnaughts coasted to a morale boosting pre-district tournament victory. By the end of three, the Dreadnaughts were ahead by a commanding 46-30 margin.

Pacing the victors was Rob Ianni with a game-high 18 points followed by Shawn Hemingway with 12. Jack Boss pumped in 12 points as the Panthers' leading scorer.

### Milan 74, Saline 50

A swarming full-court press led to a solid, embarrassing defeat of the Saline Hornets Friday night in a final contest for both the losers and victors, Milan's Big Reds. The season finale gave the Big Reds a 74-50 victory while adding a final defeat to Saline's disappointing season record.

The Hornets never got started as the Big Reds buried them beneath more than a dozen turnovers in the first half. Milan really took over in the third quarter to take a 36-21 lead and outscored the Hornets, 22-7, in the third period to take a 58-31 lead and ice

their 19th win in 20 games this season.

Pacing the winners was John Gruden with 22 points while Sam Pope added 15 before fouling out. Rob Cranson and Pete Barnes had 10 and 12 points, respectively. John Marx led Saline with nine points.

### Lincoln 73, Tecumseh 69

Ending the season on a winning note, the Rallsplitters soundly defeated the Tecumseh Indians Friday night, 73-69. The victory ended Lincoln's season at the 500 mark with a 9-9 over-all slate.

Pacing the winners was Doug Phillips with 22 points. Dave Stasiak also chipped in with 19, Kevin Hurst added 10 and Mark Kedroske 11. High scorer for the Indians was Ron Smith with 21.

With a half-time lead of 27-26, Lincoln slid behind the Indians heading into the final stanza before finally coming out on top. The Rallsplitters' win is being followed by a contest against conference champ Milan Monday night in the first round of the Willow Run district tournament.



**You need both. Allstate home-owners insurance and mortgage protection life insurance.**

Allstate's homeowners insurance will help to rebuild your house if an insured disaster strikes. But, what if something happens to you? Who will pay off the mortgage? That's why you also need Allstate Life's mortgage protection life insurance. It helps pay off the mortgage if you die. So your family will have help to live in a debt-free home. You need both kinds of insurance.

**Allstate**  
You're in good hands.  
Allstate Insurance Company,  
Allstate Life Insurance Company,  
Northbrook, IL.  
See or phone

**JANET COOLEY**  
14000 McKinley Rd.  
Chelsea  
Ph. 475-9095

## LATE ADS Classified Clips

More Classifieds in Second Section

Ads received after 4 p.m. Saturday will appear in this section.

<b>Farm &amp; Garden</b> 2	<b>Misc. Notice</b> 12
MANURE WANTED, Well rotted, all kinds. Call 996-3169, week-day morning. x40-2	<b>TRUCK LOAD MATTRESS SALE</b> All Brand New Firm: 2 piece twin set .....\$49 2 piece full set .....\$69 Firmer: 2 piece twin set .....\$66 2 piece full set .....\$77 Firmer: 2 piece twin set .....\$77 2 piece full set .....\$88 2 piece queen set .....\$165 Mattresses sold separately. Howard Johnson's Motel, 2380 Carpenter Road, Washtenaw exit off US-23. NO PHONE CALLS, PLEASE.
<b>Recreation Eqt.</b> 3	
MOVING, MUST SELL 1979 Skyline, 14x70, 3-bedroom and shed. Like new, \$12,500. Ph. 1-596-2539. x40-2	
<b>For Sale</b> 4	
INTERNATIONAL CRAWLER loader. Ready to work. \$3,500. Call 475-7159. x39 ON-TV — \$25 off this week, no cable needed, all areas. Phone Howell 1-(517) 546-3145 any day 9 a.m.-9 p.m. x39 BUILDING AND LOT IN DEXTER, excellent investment. Ideal for business or industrial use. Ph. 1-878-3970. x43-5	
<b>Real Estate</b> 5	
ON-TV — \$25 off this week, no cable needed, all areas. Phone Howell 1 (517) 546-3145 any day, 9 a.m.-9 p.m. x39 BUILDING AND LOT IN DEXTER, excellent investment. Ideal for business or industrial use. Ph. 1-878-3970. x43-5	
<b>Lost and Found</b> 7	
FOUND — a young collie dog, Fletcher Road & Seitz Dr. area, Phone 475-9622, after 3:30 p.m. x39 REWARD — for return of our black and white 1 yr. old male Huskie, one brown eye, one blue. Phone 475-3129. x39	
<b>Baby Sitter</b> 9	
WILL BABYSIT in my Chelsea home, Monday through Friday, days. In-fants welcome. Ph. 475-7017. Call anytime. x40-2	
	<b>Bus. Services</b> 13
	<b>JIM LEACH PAINTER</b> Insured. Interior, exterior. Barn spraying, drywall hanging and patching. General Repairs For free estimate Call 475-1823 -43-5 (Additional classified ads on page twelve)

### Jaycees Seek New Members

Chelsea Jaycees are actively searching for new members. They will be hosting a meeting at the Sylvan Town Hall, 122 W. Middle St., Wednesday, March 4 at 7:30 p.m. During this meeting, the Jaycees will explain their role in the leadership development of young men. In addition, they will illustrate the group's community service via various worthwhile projects.

Local Jaycees encourage newcomers to the village to attend this informational meeting and discover what the program has to offer toward the development of new friendships.

According to Jaycee spokesmen, "There is no obligation to join the Jaycees at this time, we just want the public to learn about and understand the purposes of the Jaycee organization."

## GREAT LAKES CARPET CLEANING

709 LEONA, ANN ARBOR

## GRAND OPENING

## GET READY FOR SPRING SALE

## 20% DISCOUNT ON ALL OUR SERVICES

Through March 31, 1981

An Additional 10% Discount  
For Senior Citizens

MENTION OUR DISCOUNT OFFER  
WHEN YOU CALL US

PHONE

**994-9050**

STEAM CLEANING - DEODORIZING  
INCLUDED

CARPETS - UPHOLSTERY  
WATER DAMAGES

## GREAT LAKES CARPET CLEANING

709 Leona, Ann Arbor

Ph. 994-9050

You Read It First  
In The Standard!

## McCALLA FEEDS

12875 OLD US-12

PHONE 313-475-8153

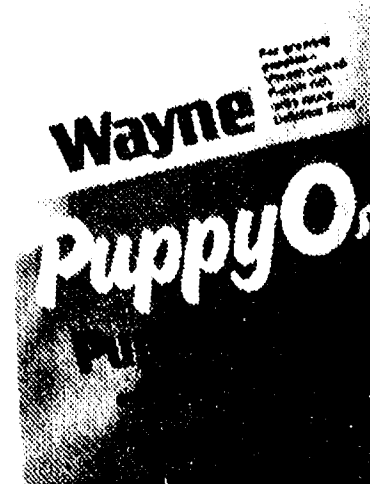
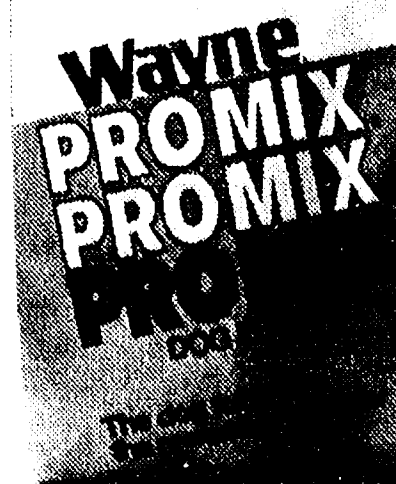
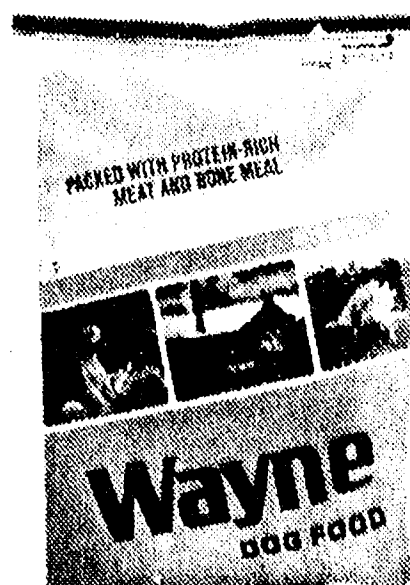
CHELSEA, MICH.

## You Are Invited to Our APPRECIATION DAY SATURDAY, MARCH 7

Supplier representatives will be present to assist you  
in your feed needs from 9 a.m. to 5 p.m.

**LUNCHEON 10 a.m. to 2 p.m. - DOOR PRIZES**  
- Ralph and Ken McCalla

**SPECIAL DISCOUNTS WILL BE OFFERED ON FEEDS**



**SPECIAL  
PRICES**

\$2.00 OFF on 50-lb. bag Wayne Dog Food, 50-lb. bag Wayne Pro-Mix or 40-lb. bag Wayne Puppy Os  
Reg. Price Wayne Dog Food .....\$12.98  
Reg. Price Wayne Pro-Mix .....\$11.15  
Reg. Price Wayne Puppy Os .....\$12.02





TROPHIES WERE BESTOWED upon the Chelsea Aquatic Club in recognition of their fine 1980-81 season. Members of the club include, front row, Tim Weir, Mike Caugman, Paul Robbins, Scott Pryor, Amy Walter, Cheryl Martin, and Martha Koerke; middle row, left to right, Gary Calhoun, Jenny Colvin, Todd Brown, Dan Degener, Missy

Young, Tina Paddock, Becca Lee and Mike Coffman; back row, left to right, Paula Colombo, Mel Gunn, Jenny Cattell, Jackie Boosey, Bob Murray, Forrest Geesey, Paula Kuzon, Karen Forrester and Jamae Ritter, and coach David Johnson and assistant coach Jon Oesterle.

## H&R BLOCK TAX TEST

Question No. 1

It is too late to claim a deduction or credit overlooked on a 1977 tax return.

☐ True ☐ False

If you know about amending a tax return, you probably know the answer. If you don't, maybe you need H&R Block. Because H&R Block knows tax laws that you might not know. You can amend a tax return for overlooked deductions and credits up to three years after the filing deadline. So the answer to the question is FALSE.

WE'LL MAKE THE TAX LAWS WORK FOR YOU

**H&R BLOCK**

THE INCOME TAX PEOPLE

105 S. Main

Open Monday through Saturday 9-6 Phone 475-2752

OPEN TODAY - APPOINTMENTS AVAILABLE

## Fair Board Notes

The regular meeting of the Fair Board was held Thursday, Feb. 26. It was called to order by President J. Heydlauff. Other officers present were manager, L. Grau, secretary, M. Guenther and treasurer, K. Poljan. Board members present were R. Poljan, A. Bradbury, H. Gross, R. Heller, J. Herrick, J. Houle, J. Klink, J. Layher, R. Lesser, Jr., J. Roberts, C. Stapish, M. Stapish, B. Stoffer, H. Trinkle, E. Heller and correspondent, J. Wellnitz.

Mark Stapish has rentals for the Merchants Building at the Fair. He may be reached at 475-8393.

The secretary and treasurer reports were read and accepted. After routine business was done, discussions about the Fair were in order. One topic was a proposal that 12-year-olds and under should be admitted free of charge. Season passes in the form of books or punch passes were also discussed.

Booster Club views were welcomed; the organization was commended on its good work. The superintendents' notes were discussed and some changes were made.

The community is reminded of the Carl Heller Memorial Euchre

party set for Saturday, March 7. Further information may be obtained by contacting Bob Heller at 475-2967.

## Ag. Secretary Wants No Cut in Research

USDA Secretary John Block believes that agricultural research and the promotion of U.S. agricultural exports should not face budget cutting efforts by the Reagan administration.

"Agricultural research is one area that I would like to strengthen, because it has been neglected in recent times. Programs that will benefit commercial exports will be receiving favorable treatment, if there is such a thing in our budget this year," Block believes.

## Willow Run Flies...

(Continued from page one) height and jumping ability of Willow Run, Chelsea was, for the first time all year, tired at the end of the contest.

Coach Raymond pointed to the highlight of the game, the fact that the Bulldogs were capable of playing with a good team. "The effort is what counts," he said, "I'm not disappointed with the outcome. It was a good game, over-all."

Pacing the Bulldogs was senior Captain Jeff Dills with 14, followed by Jon Riemenschneider with 10. Chris Tobin added eight, David Wojcicki and Mike Barels four each and Toby Boyd contributed a pair of points. But the absence of Jeff Price, out with tendonitis, hurt.

Indicated by the statistics was Willow Run's size and jumping ability. The Flyers out rebounded the Bulldogs by a near 2-1 margin, 38-20. Turnovers totalled 16 for Chelsea and 10 for the victors.

But, from the free throw line, Chelsea was excellent, hitting 10 in 11 attempts for a season high 91

percent. Willow Run, on the other hand, was 2-9 for 22 percent.

Field goals tallied by the Bulldogs averaged at 35 percent, 16-46, an indication of Willow Run's intimidation. The Flyers were 30 for 69 for a 43 percent average.

The loss dropped the Bulldogs

to 12-6 over-all as they prepare to host the districts. Chelsea will take on arch rival Dexter Tuesday night, beginning at 7:30 p.m.

Tickets for the district championship games will go on sale at 7:30 a.m. the morning of each game; sales will continue until 9 a.m.. Tickets, at a cost of \$1.50 each, are available at the office of Chelsea High school Athletic Director Ron Nemeth.

## LITTLE ROOSTER RESTAURANT & LOUNGE

11485 N. Territorial Rd.

(Corner Dexter Townhall Rd.)

**CARRY-OUTS 426-8668**  
**PIZZA - FRIED CHICKEN**

### Tuesday Special

**PRIME RIB DINNER**

**\$6.95**

Served with Tossed Salad and Ranch Fries  
4 to 8 p.m.

### Wednesday Special

**LADIES NIGHT**

1/2 off on all mixed drinks

**CHICKEN DINNER**

with cole slaw, ranch fries

**\$5.45**

4 to 8 p.m.

### Thursday Special

**SPAGHETTI DINNER**

**\$4.50**

All you can eat - 4-8 p.m.

**PHONE 426-8668**

Tues., Wed., Thurs., 4 to 10

Fri., 4-2, Sat., 4-2, Sun., 2-10

FEATURING FINE FOODS

**LITTLE ROOSTER**

LUNCHES - DINNERS - COCKTAILS

### Friday Special

**OCEAN PERCH DINNER**

All you can eat - 4-8 p.m.

**\$5.95**

Live Entertainment

**COUNTRY PLEASURE**

Dancing 9:30-1:30

### Saturday Special

**10-OZ NEW YORK SIRLOIN**

**\$7.95**

Served with Tossed Salad and Ranch Fries

Live Entertainment

**COUNTRY PLEASURE**

Dancing 9:30-1:30

### Featuring Sunday

**SURF & TURF**

New Zealand Lobster

Tail - 5-Oz. Sirloin

Steak

Served with Baked Potato, Tossed Salad

**\$12.95**

2 to 10 p.m.

## Go fishin' for McDonald's® Filet-O-Fish.

Our Filet-O-Fish is America's most popular fish sandwich because people can taste the effort we put into it.

We go to the icy waters of the North Atlantic for the biggest and best fish. That's because McDonald's uses only 100% government inspected Grade A prime white filets.

Then we bread them our own special way. So they cook up golden on the outside, moist and flaky on the inside.

For zest, we add our own creamy tartar sauce.

And we add half a slice of cheese to each sandwich for extra richness and flavor.

We work hard to make sure each Filet-O-Fish sandwich is the very best. And when you taste it, you'll know why we work so hard.

Just one bite and you're hooked.

**Nobody can do it like McDonald's can™**



1535 S. Main St.

Chelsea

"I'm hooked!"



## BUY ONE FILET-O-FISH GET ONE FREE

Just present this coupon when buying a Filet-O-Fish sandwich and you'll get the second one free. Try it soon! Limit one coupon per customer, per visit. Please present coupon when ordering.

Coupon good only at Chelsea McDonald's  
March 3-31, 1981.

### THUNDERBIRD

MODEL	BASE PRICE	10% CASH ASSISTANCE
2-Door	\$ 7,757	\$ 776.00
Town Landau	8,895	890.00
Heritage	11,581	1,157.00



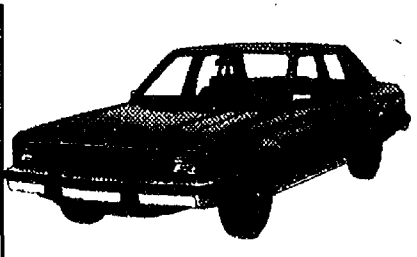
### GRANADA

MODEL	BASE PRICE	10% CASH ASSISTANCE
L 2-Door Sedan	\$ 6,474	\$ 648.00
L 4-Door Sedan	6,633	664.00
GL 2-Door Sedan	6,875	688.00
GL 4-Door Sedan	7,035	704.00
GLX 2-Door Sedan	6,988	699.00
GLX 4-Door Sedan	7,148	715.00



### FAIRMONT

MODEL	BASE PRICE	10% CASH ASSISTANCE
2-Door Sedan	\$ 6,091	\$ 610.00
4-Door Sedan	6,210	621.00
Futura 2-Door	6,407	641.00
Futura 4-Door	6,421	643.00
Wagon	6,503	651.00
Futura Wagon	6,735	674.00



### MUSTANG

MODEL	BASE PRICE	10% CASH ASSISTANCE
2-Door	\$ 6,230	\$ 623.00
3-Door	6,467	647.00
Ghia 2-Door	6,674	668.00
Ghia 3-Door	6,789	679.00



Ford and your participating Ford Dealer announce a 10% Cash Assistance Program. Make your best deal on any of the new 1981 Fords listed above. Buy and take delivery between February 19 and March 21, 1981, or order by March 21, 1981, and Ford will send you a check worth 10% of the sticker price for the base vehicle. If you wish, you may apply the equivalent amount toward your down payment. Offer limited to one vehicle per customer.

**Hurry! Offer ends March 21, 1981.**  
**At your participating Ford Dealer.**

**PALMER**



Now Michigan's Oldest Ford Dealer  
Since April 15, 1912

224 S. Main St., Chelsea

Ph. 475-1301



1981	March	1981
S	M	T
1	2	3
4	5	6
7	8	9
10	11	12
13	14	15
16	17	18
19	20	21
22	23	24
25	26	27
28	29	30
31		

## COMMUNITY CALENDAR

Senior Citizens meet third Friday of every month, pot-luck dinner, games and cards, 6 p.m. at Senior Citizen Activities Center on W. Middle St.

Home Meals Service, Chelsea. Meals served daily to elderly or disabled. Cost per meal, \$1.50 for those able to pay. Interested parties, call Barbara Branch, 475-7044 or Ann Feeney, 475-1493.

Recreation Council meets first Wednesday of each month at 7:30 p.m. in the village council room above the police offices. Open to the public.

Knights of Columbus Women's Auxiliary, second Thursday of each month, 8 p.m. at K. of C. Hall, 20750 Old US-12.

Lima Township Planning Commission, third Tuesday of each month, 8 p.m., Lima Township Hall.

American Legion hospital equipment is available by contacting Larry Gaken at 475-7891.

Sharon Township Board regular meeting, first Thursday of each month, 8:30 p.m. adv42tf

Lyndon Township Board regular meeting, third Tuesday of each month, 7 p.m., in Lyndon Town Hall.

North Lake United Methodist Church Community Men's Group, second Thursday of every month at 7:30 p.m. in the activities building.

Stockbridge American Legion Dance Saturday, March 7. Music by the "Four Guys," 9 p.m. to 1 a.m., American Legion Hall, Stockbridge. adv39-2

Euchre Card party, March 7, 8 p.m., Chelsea Fair Service Center. Refreshments served. Door prizes. Proceeds donated to the Carl Heller Memorial Fund. adv39-2

Chelsea Kiwanis Club meets every Monday, 6:30 p.m. at Chelsea Community Hospital.

Chelsea Village Council meets the first and third Tuesdays of each month. advtf

Inverness Country Club pot-luck and euchre party, 6:30 p.m., first Tuesday of each month. adv17tf

Lions Club, first and third Tuesday of every month, 6:45 p.m., at Chelsea Community Hospital.

Chelsea Community Hospital Nutrition Program pre-natal nutrition classes, fourth Tuesday of each month, 6 to 7 p.m. at the hospital. To register, phone 475-1311 (ext. 354). Class is free of charge.

Chelsea Band and Orchestra Boosters, second Thursday of each month, 7:30 p.m., high school band room.

Sylvan Township Board regular meetings, first Tuesday of each month, 7 p.m., Sylvan Township Hall, 112 W. Middle St. advtf

Lamaze childbirth preparation classes are offered continually at Chelsea Community Hospital. To register, call 475-9558 or 475-7484.

Chelsea Communications Club meets fourth Wednesday of each month, 8 p.m., Chelsea Lanes basement meeting room.

Chelsea Lioness, second Monday of each month at the Meeting Room in the Ann Arbor Trust Co. on M-52, Chelsea, at 7:30 p.m. Call 428-7179 or 475-9455 for information.

Meetings of the Lyndon Township Planning commission are held at 8 p.m. the second Thursday of every month at Lyndon Town Hall. adv.

Lima Township Board regular meeting first Monday of each month, 8 p.m., Lima Township Hall. advx13tf

Chelsea Co-op Nursery is now accepting applications for fall, 1981. Please call Denise Martell, 475-1966, or Georgette Hansen, 475-2245. xadv33

Rebekah Lodge No. 130 meets the first and third Tuesday of each month, 7:30 p.m.

Chelsea Child Study Club second and fourth Tuesday of each month, 8 p.m. tf

Chelsea Jaycees, first Tuesday of each month. For more information call, 475-7285.

RSVP, Retired Senior Volunteer Persons, Thursday, March 5, 3:30 p.m. at 995 N. Maple Rd., Ann Arbor. All senior citizens 65 and over are invited.

Lima Center Extension Study Group, March 11, 10:30 a.m., at Donna Bradbury's home. Lessons, "Putting Some Fun in Your Life" and Conning the Conner," given after lunch by Jane Schairer and Barbara Edict. Hostesses, Donna Bradbury and Elaine Secord.

Olive Lodge No. 156 F&M regular communications, Tuesday, March 3, 7:30 p.m.

Olive Chapter No. 140 Royal Arch Masons, regular convocations, Thursday, March 5, 7:30 p.m.

K. of C. Fish Fry dinners, St. Mary School, Chelsea, Fridays, 5:30 to 8 p.m., March 6, 13, 20, 27, April 3, 10. Adults \$3.50, children \$2.50. adv44-6

## Volleyball Team Evens Record at 5-5

Chelsea's Bulldog spikers put an end to a four game losing streak by soundly defeating the Lincoln Railsplitters in a Southeastern Conference match Monday evening, Feb. 23.

Patty Rawson led all Bulldog serving and served for a pair of aces while Sue Branham led the setters at the Chelsea team upped their season record to 10-7 overall and 4-5 in the conference, winning straight sets, 15-12, 15-8.

The following night, the Bulldogs hit the .500 mark by evening their league record at 5-5, challenging Milan's Big Reds, 15-6, 11-15 and 16-14. Pacing the Chelsea volleyballers was Karen Kiel who served for seven points while Patty Rawson scored nine points, including four aces.

## GIRL SCOUTS

TROOP 247—We have been very busy this month doing pool knitting and we went bowling. We worked on favors for the Father and Daughter banquet. Jennifer Gilmore brought treats. Melissa Fletcher, scribe.

Chelsea Refunders, Tuesday, March 10, 7 p.m., at 13340 Harper Drive, Chelsea. New members welcome, bring coupons and refunding forms to trade. For more information call 475-8451.

Regular meeting of Herbert J. McKune No. 31 American Legion Auxiliary, Monday, March 9, 6:30 p.m., pot-luck, Senior Citizens Center.

Olive Chapter 108, Order of the Eastern Star. Regular meeting Wednesday, March 4, 7:30 p.m., Masonic Hall. Initiation of officers will follow the business meeting.

Chelsea Jaycee Auxiliary sponsoring cribbage tournament at the Village Bakery, Monday, March 9, 16 and 23. Play-offs, March 30. Registration begins at 6:30, play at 7. For further information contact Ginny Wheaton at 475-7412 or Carol Smith at 475-2038.

North Lake Co-Op Nursery school is now taking enrollments for the 1981-82 year for 3- and 4-year old sessions. Anyone interested should call Jan Knott, 475-2455. adv39tf

Chelsea Community Farm Bureau, Thursday, March 12, 7:15 p.m., at the home of Mr. and Mrs. Norman Hinderer, 4480 Chelsea-Manchester Rd., pot-luck. Bring table service and a dish to pass.

Woman's Club of Chelsea, Tuesday, March 10 at the Collector's Item, 103 W. Middle St., 8 p.m. Annabelle Gochanour and Gene Werdehoff on "History of Glass and China." Hostesses: Lila Pawlowski and Pat Scholz.

## Beach Volleyball Teams Lose Two

The Beach Middle school girls volleyball teams saw action twice last week. In their first home game, the teams hosted Lincoln. The 7th graders lost a close match, 3-15, 15-11 and 11-15. "The team members played their best match of the season, with many volleys," said Coach Vogel.

In the first game, the team was cold and couldn't get together. The second game evidenced that things turned around with the help of the excellent serving duo of Baja Trimble with eight points and Kristi Headrick with seven points. They were unable to hold on in the third game, however, in spite of Amy Oxner's five point serving streak. Michelle Easton, Christie Favors, Kristi Headrick, Amy Oxner and Jill Schaffner gave excellent support with 75 percent or better successful bumps.

On Thursday, the teams travelled to Saline where they found tough competition, losing 6-15 and 13-15. Donna Bruck, Christi Favors, Susan Jacques, Cindy Kvarnberg, Lisa Lewis and Jill Schaffner all served well. Nevertheless, the team's downfall was on defense with only Kristi Headrick bumping 75 percent or better. Playing particularly well in this match were Donna Bruck, Jill Schaffner, Missi Keiser, Kristi Headrick and Karen Killelea.

## Bill McGonigal Heading Jackson Coast Guard Aux.

Bill McGonigal, 1221 Freer Rd., has been elected Commander of U.S. Coast Guard Auxiliary Flotilla 17-05 in Jackson. The new Flotilla is part of a new Inland Division, which includes Lansing, Brighton, Ann Arbor and Fort Wayne. The Inland Division represents a new trend by the Coast Guard to provide increased boating safety information and education to the recreational boater on small lakes.

According to Cmdr. McGonigal, the Flotilla has already started its activities with a booth at the Jackson Boat Show, held from Feb. 26 through March 1. Additionally, a "Sailing and Seamanship" class is scheduled to begin in Jackson on Thursday, March 12.

Supplemental information on attending the class or joining the Coast Guard Auxiliary may be obtained by contacting Bill or Terry McGonigal at 475-7484.

Please Notify Us In Advance of Any Change in Address

## MAGNAVOX ANNUAL SALE INSTANT REBATES

Up to \$50<sup>00</sup>

Sale Ends March 9th

HEYDLAUFF'S

113 N. Main St.

Ph. 475-1221

Advertisers Like To Know You Read Their Adv. in The Standard

Ann Arbor Parks &amp; Recreation Department

LOWEST GOLF PRICES PAR NONE!

GOLFERS, SAVE UP TO 19% ON A CITY GOLF COURSE SEASON PASS! Buy early! From March 1 through March 14, golfers can take advantage of the Department of Parks & Recreation's "Early Bird Discount Special." Passes are good for the 1981 golfing season at both Huron Hills and Leslie Park Golf Courses.

NOW AVAILABLE AT TWO LOCATIONS.

Season Passes can be purchased at the Ann Arbor Department of Parks & Recreation offices, fifth floor, City Hall, 100 N. Fifth Ave., or at Leslie Park Golf Course, 2120 Traver Rd., Monday thru Friday, 8:00 am-5:00 pm.

BE ON THE GREENS THIS SUMMER FOR THE LEAST GREEN NOW!

Leslie Golf Course / 2120 Traver Rd., 668-9011

Huron Hills Golf Course / 3465 E Huron River Dr., 971-9841



**NOW**

interest bearing checking accounts are here earning

**5 1/4%**

interest

A checking account can be a DOLLAR BUILDER as well as a BILL PAYER for you.

Ask For Details.

No need to look elsewhere for interest bearing checking accounts. We pay the maximum rate of interest any financial institution can pay, 5 1/4% on interest bearing checking accounts. Our interest bearing checking accounts are service charge free with a balance of \$1,000.00. Drop below the \$1,000.00 balance and pay only a \$5.00 service fee per month. Interest is compounded daily and paid monthly for an effective annual yield of 5.47%.

Open your interest bearing checking account with the people who have the expertise in checking... US!

**CSB CHELSEA STATE BANK**

Member F.D.I.C.

305 South Main / 475-1355

**BOB SILVA SAYS:**

**CASH BONUS**

**\$500 CHEVETTES - CITATIONS**

**\$700 CAMAROS - MONTE CARLOS**

**13 CITATIONS**

**9 CHEVETTES**

**2 CAMAROS**

**2 MONTE CARLOS**

**LET'S GET AMERICA ROLLING!**

**BOB SILVA**

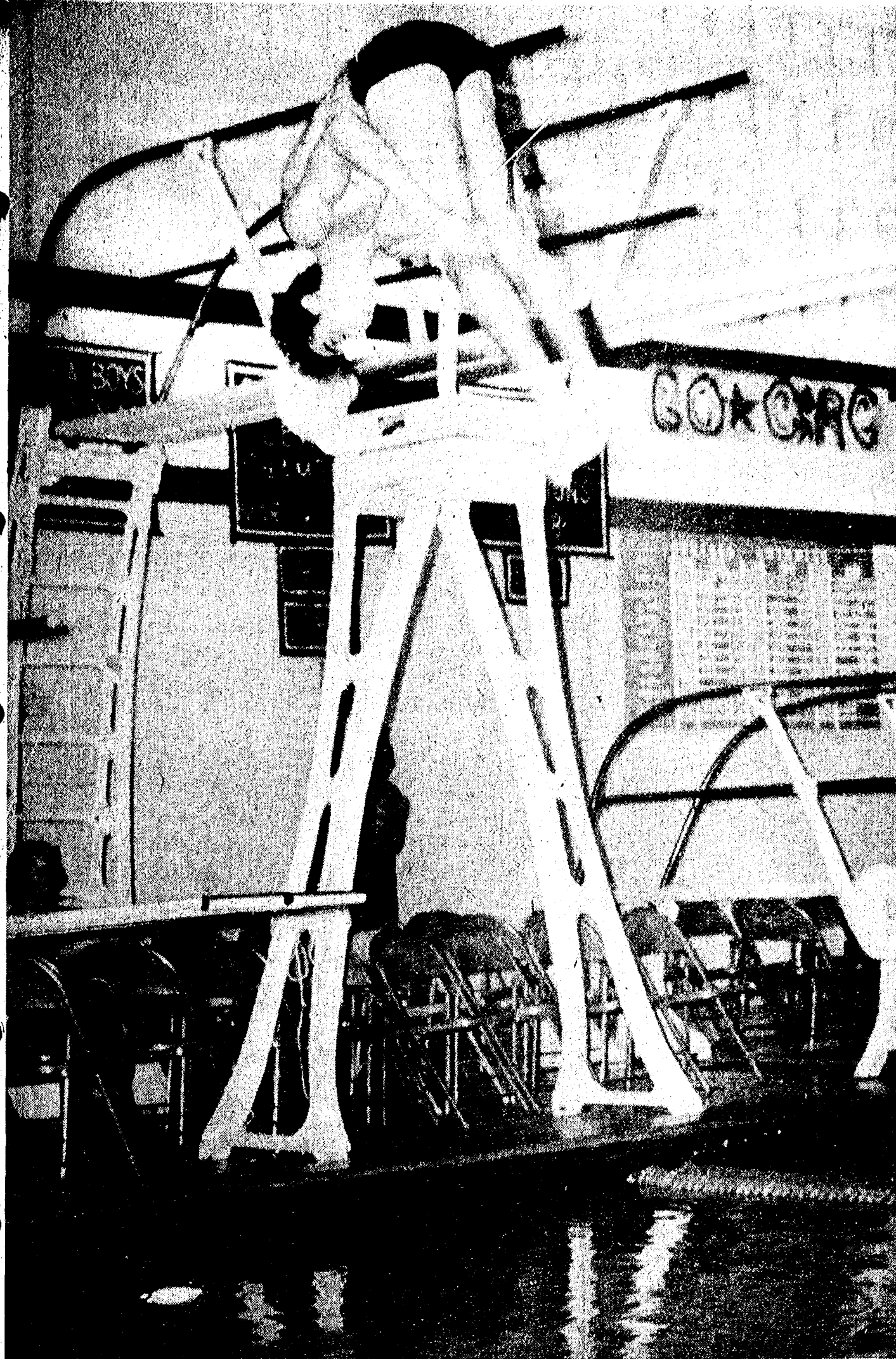
**CHEVROLET**

**1603 S. MAIN**

**475-1373**

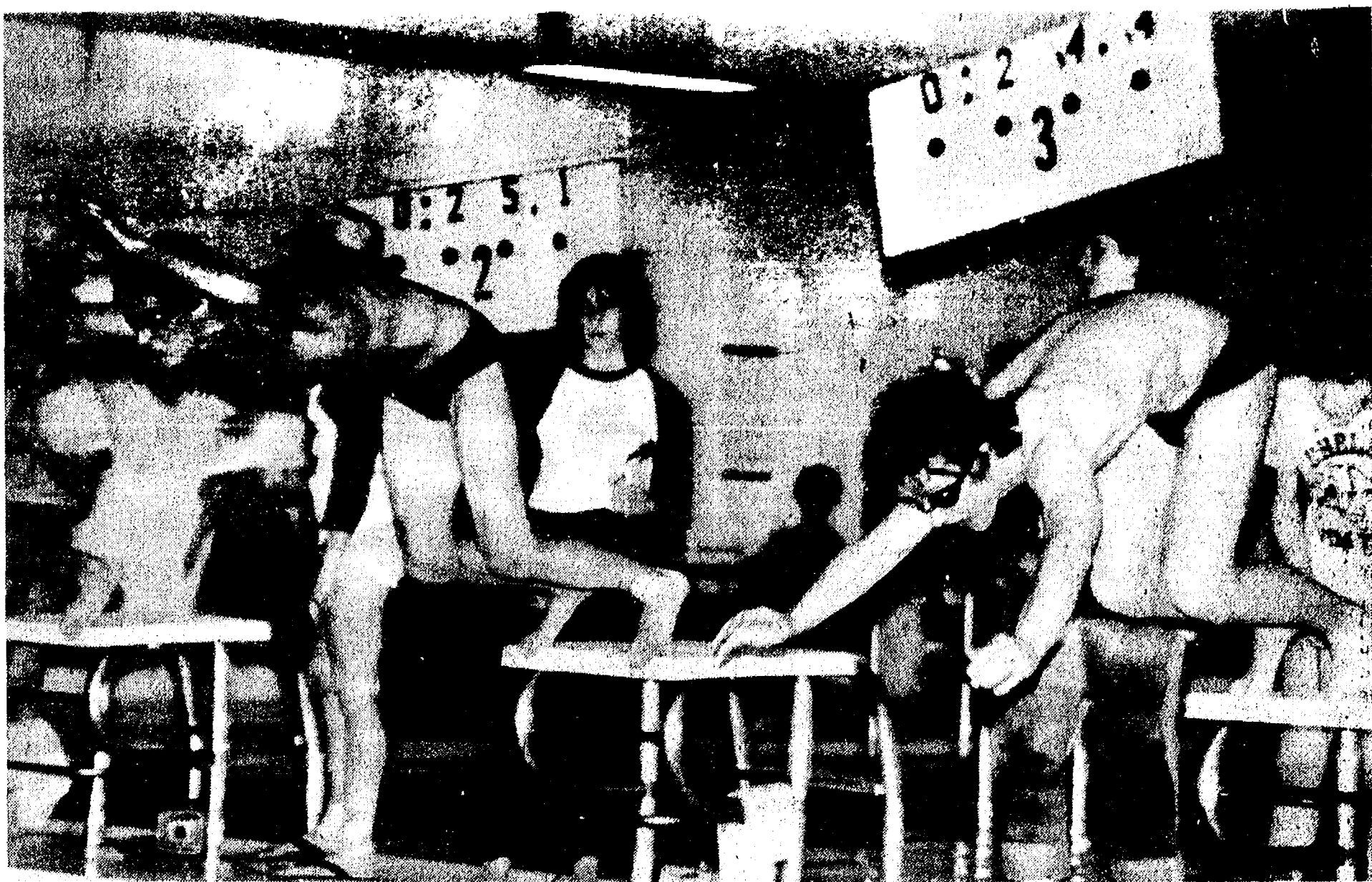
Main Street at Interstate 94





**PREMIER DIVER:** This inward 1, 1½ led Craig Wirtz to his third consecutive first-place season win, ending his regular season with a total 331.30 points at Thursday's Chelsea Invitational.

In the company of Chelsea's other diver, Kraig Leach, Wirtz will be competing in the state meet Friday and Saturday, March 13 and 14.



**ON YOUR MARK, Get Set, Go . . .** Dave Nicola, left, and Mike Mason take to the water in the 50-yard freestyle event during the Chelsea Invitational. Touching first was Nicola with a meet, pool and varsity record of :22.8. Following behind with a time of :23.4 was Mason who swam his way into a state qualifying position.

## Swim Team Qualifies 14 Members for State Meet

The men's swimming team from Chelsea ended their regular season in the same fashion they have ended everything all year—first. Out of the 10-team field, Chelsea scored a meet record 370 points.

Other scores were: Monroe 306, Erie Mason 114, Willow Run 111, Riverview 97, Dundee 68, Avon-

dale 60, Country Day 47, Lincoln 36 and Dexter 0.

The meet was a great success and the team swam even better with 41 life-time best times. Not one swimmer missed getting a life-time best.

The meet was close most of the way; it wasn't until the end that Chelsea started to pull away.

Many meet records were set, including Monroe and Chelsea each lowering the medley relay record from 1:47.9 to 1:45.1. Schultz of Monroe broke the meet and pool record with a time of 2:04.2. Dave Nicola set a meet, pool and varsity record in the 50 free with a time of :22.8. A varsity record was set by Dave Mason in the 100 fly, :55.0; Phil Hoffman set a meet record in the 100 free, :51.3; Don Stove of Monroe set a meet and pool record in the 100 breaststroke, 1:04.7, and the Chelsea free relay won and set a meet record, 3:31.4.

The Chelsea results were as follows: second "A" medley relay of John Robbins, Dave Nicola, Dave Mason and Mike Mason at a state qualifying time of 1:45.2; "B" medley relay of Kirk Hawks, Shawn Pierson, Wayne Smith and Craig Wirtz at 1:51.1; 200 free, Phil Hoffman first at 1:51.7, a varsity and state qualifying time; Sean Oxner, second at 1:52.3 a varsity and state qualifying record; Paul Schumann, sixth at 2:01.1; John Hoffman, ninth at 2:02.7 and non-scorers with life-time bests were Darrin Fowler at 2:17.1 and Richard Merkel at 2:24.8.

The 200 IM results found Tom Gaunt second at a state qualifying time of 2:06.4; Dave Mason, fifth at 2:09.1, a state qualifying time; Shawn Pierson, 11th at 2:16.9; and non-placers who swam fine times included Kevin Colombo at 2:27.9; Steve Ramsey at 2:38.8 and Ted Merkel at 2:39.3.

50 free results: first, Dave Nicola at :22.8 a meet, pool and

state qualifying time; Mike Mason, second at :23.5, a state qualifying time. Others with life-time bests included Kent Noll at :25.6, John Drew at :26.4, Mike Bohlender at :27.0, Steve Wolak at :27.1, Alan Roderick at :29.4.

Diving results included, for the third consecutive year, Craig Wirtz with 331.30 and Kraig Leach, 11th with 224.90. Both divers qualified for the state meet.

Butterfly results found Dave Mason in second place at :35.9, a varsity record and state qualifying time; Kirk Hawks, fourth at :57.9, a state qualifying time; John Robbins, fifth at 1:01.1 and Wayne Smith, 11th at 1:06.2.

The 100 freestyle results found Phil Hoffman in first at :51.3, a state qualifying time and meet record; Mike Mason, second at :52.4. Others with best times included Kent Noll at :57.8, John Drew at :58.9, Richard Merkel at 1:01.5 and Mike Bohlender at 1:01.7.

In the 500 free, Sean Oxner finished first at 5:13.2. John Hoffman, fourth at 5:24.8, Paul Schumann, sixth at 5:34.4, Kevin Colombo, 12th at 5:49.9 and Darrin Fowler, 16th at 6:16.3.

The 100 backstroke results included Tom Gaunt, first at :58.7, a state qualifying time; John Robbins, third at 1:01.4, a state qualifying time; Kirk Hawks, seventh at 1:03.2, Steve Ramsey, thirteenth at 1:11.0 and with a person best time, Alan Roderick at 1:21.6.

(Continued on page 11)

## Great Tax Shavings!

Here's how to whittle down your 1980 Income Tax . . .

There's still time to reduce the total taxable income reported on your 1980 tax return and build for your future at the same time! Here's how—

If you're not presently covered by a qualified pension or profit-sharing plan where you work, or if you're self-employed, you are eligible to open an Individual Retirement Account (IRA) at Ann Arbor Trust which allows you to set aside each year—tax free—15% of your annual income to a maximum of \$1,500 for your future.

These deposits are tax deductible, which means you can reduce the total taxable income on your 1980 tax return by the amount you deposit between now and April 15th!

Your money will earn 12% interest compounded quarterly for an effective annual yield of 12.551% when you deposit at least \$1,000 for thirty months or more. Interest earned on your contribution is not taxable until you retire, when your tax bracket will probably be lower.

Accounts are insured up to \$100,000 by the Federal Deposit Insurance Corporation. You pay no fees or charges to open an Individual Retirement Account at Ann Arbor Trust.

Call or stop by Ann Arbor Trust today for complete information on how you can lower your taxes and start building for the future at the same time. Our financial advisors will be happy

to meet with you and discuss the retirement savings plan best suited to your needs.

Remember . . . deposits must be made by April 15th to qualify as deductions from your 1980 taxable income!

### Keogh Account Holders Also Eligible!

If you opened a Keogh Account at Ann Arbor Trust before December 31, 1980, and deposited less than your allowable amount, you too are eligible for great tax savings. All additional contributions to your Keogh Account made between now and April 15th may be deducted from your 1980 taxable income!



Withdrawals from an IRA or Keogh Account prior to age 59½ are subject to substantial tax penalties.

Federal regulations require substantial interest penalty on payment of a Time Certificate of Deposit before maturity.

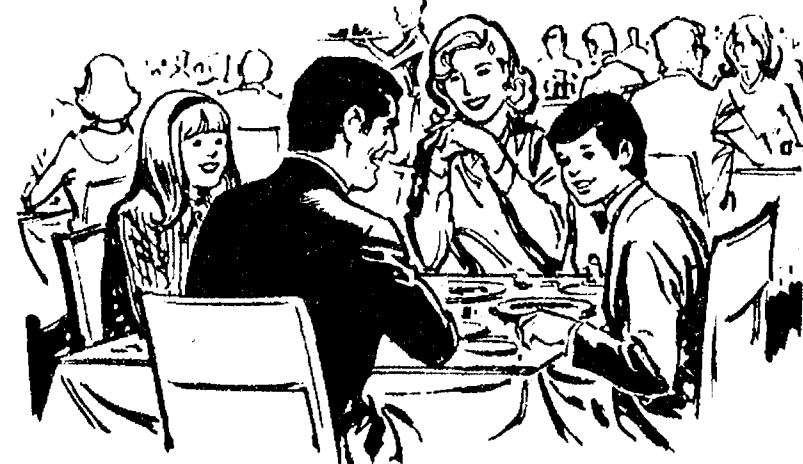


**ANN ARBOR TRUST**

**THE BANK OF TRUST**  
CHELSEA BANKING OFFICE • 475-9154  
1478 Chelsea-Manchester Road • Member FDIC

## THE CAPTAINS TABLE

A Pleasant Place To Dine



### Try Our Inflation Fighting LUNCHEON SPECIALS

Delectable Home-Made Soups and Deliciously Prepared Sandwiches

**\$1.75**

NOTE NEW HOURS:

Mon., Tues., Wed. . . . . 6 a.m. to 7 p.m.  
Thurs., Fri. . . . . 6 a.m. to 9 p.m.  
Saturday . . . . . 7 a.m. to 9 p.m.

## THE CAPTAINS TABLE

8093 MAIN ST., DEXTER  
PH. 426-3811





**PUPPET PROJECT:** Frogs, Hippos, Giraffes, Sharks oh my! Leslie Manning and Christine Young of Girl Scout Troop 58, demonstrate their 1980-81 community service projects, hand-stitched animal puppets for the children at Mott's Children's Hospital in Ann Arbor. The hand-made menagerie was transported to the hospital last week by the troop.

### BIDDY BASKETBALL ROUND-UP:

## Season's First Overtime Contest Won By Celtics

#### Warriors 34, Trailblazers 32

In a closely played contest, the Warriors prevailed, 34-32. Coming back from a 19-9 half-time deficit, the Warriors were led by a hustling Dave Graves with 12 points and Mike Feeney with four. John Cattell played a fine game at guard.

For the Blazers, Brian Coy, Joe Eassa and Mike Popovich played excellent defense. Mark Bentley scored 10 points and controlled the boards while Todd Starkey was the game's leading scorer with 18 points.

#### Nets 42, Jazz 39

In a classic clash of styles, the Nets' fine team performance overshadowed a great individual performance by the Jazz's Kevin Maynard.

The Nets played an excellent team game led by Jon Lane with 19 points. Bill Buntin contributed 12 points while Randy Hafner added 10 and Robbie McDowell two. Matt Steinhauer was a demon on the boards.

Kevin Maynard scored a game-

high 35 points for the Jazz, to keep his team constantly within striking distance.

#### NBA STANDINGS

	W	L
Warriors	3	0
Jazz	1	2
Nets	1	2
Trailblazers	1	2

#### Bullets 36, Rockets 31

The Bullets played excellent team basketball in handing the Rockets their second defeat of the season. Jeff Marshall led the winners in scoring with 16 points, getting ample support from Dave Kvarnberg and Clay Hurd with 12 and eight points, respectively. Scott Guyor, Kris Roberts and Dave Bable contributed excellent all-around games.

For the Rockets, Greg Boughton scored 13 points. Bill Huetteman and Scott Marentay added six points each followed by Alan Beckwith with four and Shawn Henry with two. Good defensive play for the Rockets came from Nathan Hatto, Dan Luck, Mike Hollo, Steve Williams and Mike Hodgson.

#### Celtics 50, Pacers 49

In the season's first overtime game, the Celtics prevailed, 50-49. The game ended 47-47 after regulation time.

Craig Maynard led the Celtics' attack with 23 points while Jeff Steele and Ward Beauchamp contributed six points apiece. Also chipping in were Jeff Prentice and Adam Heeter with four points each and two from Ken Beauchamp, whose free throw in the overtime game gave the Celtics their third straight win.

The Pacers also featured a well-balanced attack. In the first half, Phillip Eassa, Brian White and Loren Keezer gave the Pacers their offensive fire power. Loren Keezer and Mark Jackson carried the load in the second half.

#### Suns 34, Supersonics 16

The Suns turned a close first half contest into a runaway in the second half. The Suns played an excellent offensive game, getting key performances from Rob Stearn, Kevan Flanagan, Jennifer Borton and Laura Torres.

The Supersonics played outstanding defense in the first half with Reno Nye, Luman Strong, Jr. Morseau and Craig McCalla turning in fine performances. Kevin McKenzie did a fine job of rebounding on both the offensive and defensive boards.

#### Lakers 28, Spurs 23

Robbie Lyeria and Ted Wheaton played great games to lead the Lakers to a come-from-behind 28-23 victory. Robyn Krichbaum and Jim Beaver turned in outstanding defensive performances for the Lakers.

For the Spurs, John Collins scored a game-high 15 points and got support from Mark Larson, Dave Steele, Greg Clark and Eric Frisinger, each of whom added two points. Defensive standouts for the Spurs were Don Platcher, Kurt Kinsley and Scott Mullison.

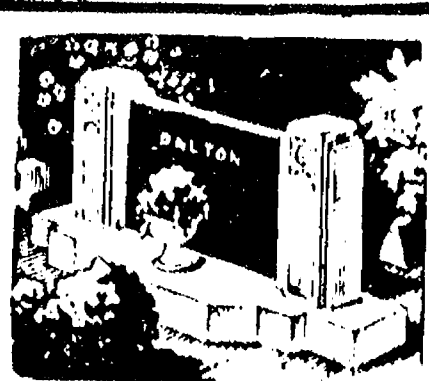
#### ABA STANDINGS

	W	L
Celtics	3	0
Suns	3	0
Pacers	2	2
Lakers	2	1
Bullets	1	2
Rockets	1	2
Spurs	0	3
Supersonics	0	3

#### Kings 34, Bucks 24

The Kings continued their winning streak by defeating the Bucks in a well played game. The Kings were led in scoring by Kyle Plank's 14 points followed by his brother Kerry with eight. Tom Steele and Bob Wilhoit contributed four points apiece while Betsy White and Denny Clark chipped in two each to round out the Kings' scoring.

For the Bucks, Steve Emmert and Rob Stofer were the leading scorers with 10 points each. The rest of the Bucks played excellent basketball but were unable to match the size of the Kings inside.



MAUSOLEUMS ★ MONUMENTS  
BRONZE TABLETS ★ MARKERS

### BECKER MEMORIALS

6033 Jackson Road  
ANN ARBOR, MICHIGAN

#### Nuggets 26, Pistons 14

The Nuggets notched their first victory of the season by playing an excellent team game on offense. Pacing the team were Mike Loftis with nine points and Chad Raymond with eight.

The Pistons, too, had a balanced offensive performance led by Chris Spencer's four points and two each from Kristen Bohlender and Chris Haugen.

#### Knicks 26, 76'ers 19

Chad Starkey paced the Knicks in scoring with 24 points while Jeremy Stephens chipped in with two. Joe Wolf played excellent defense and contributed a number of rebounds to the Knicks' cause.

The 76'ers were led by John Flannery's 18 points. Adam Tillman and Jason Scriptor pilfered several errant passes which were converted into 76'er baskets. The entire 76'er team showed considerable improvement since their opening game.

#### WBA STANDINGS

	W	L
Kings	3	0
Knicks	2	1
Bucks	2	1
76'ers	1	2
Nuggets	1	2
Pistons	0	3

### Chelsea Village Council Proceedings

February 24, 1981

#### Special Session.

The meeting was called to order at 7:30 o'clock P.M. by President Ritter.

Present: President Ritter and Administrator Weber.

Trustees Present: Chriswell, Kanten, Keezer, Merkel, Popovich and Sweet.

Absent: Clerk McGibney.

Others Present: Jerry Satterthwaite.

Administrator Weber was appointed to act as temporary Clerk.

Motion by Chriswell, seconded by Sweet, to suspend the reading of the minutes of the previous meetings. Roll call: Ayes all. Motion carried.

Motion by Sweet, seconded by Chriswell, to amend the General Fund Budget for the period ending February 28, 1981 to read as follows:

101-335-000. ....\$80,000.  
101-900-000. ....\$177,677.

Roll call: Ayes all. Motion carried.

Motion by Popovich, seconded by Keezer, to authorize payment of bills as submitted. Roll call: Ayes all. Motion carried.

## SYLVAN TOWNSHIP BOARD OF REVIEW

Notice is hereby given to all persons liable to assessment for taxes in the

### TOWNSHIP OF SYLVAN

County of Washtenaw, State of Michigan

That the Assessment Roll of said Township as prepared by the undersigned will be reviewed by the Board at

### SYLVAN TOWNSHIP HALL

West Middle Street, Chelsea, Michigan

Appeals and conferences with taxpayers will be heard on

Monday & Wednesday, March 9, 11, 1981

from 9 a.m. to 12 Noon and 1 p.m. to 4 p.m.

and on

Tuesday, March 10, 1981

from 6 p.m. to 9 p.m.

the Board of Review will be in session. Upon request of any person who is assessed on said tax roll or of his or her agent and upon sufficient cause being shown, said Board of Review will correct the assessment as to such property in such manner as will in their judgment make the valuation relatively just and equal.

Such assessment tax roll as reviewed and approved by said Board of Review will be the assessment roll of said Township of Sylvan for the year 1981.

The County Board of Commissioners of Washtenaw County has proposed the following starting ratios for Sylvan Township for the year 1981: Agriculture, 43.47; Developmental, 43.47; Industrial, 44.52; Commercial, 46.57; Residential, 43.11.

GEORGE SWEENEY, Supervisor

Dated: Feb. 7, 1981.

## LIMA TOWNSHIP BOARD OF REVIEW

NOTICE IS HEREBY GIVEN to all persons liable to assessment for taxes in

### LIMA TOWNSHIP

11452 Jackson Road, Chelsea, Michigan

that the Board of Review will meet at the

### LIMA TOWNSHIP HALL

to hear appeals to the Assessment Roll on

MONDAY, MARCH 9, 1981

9 a.m. to 12 Noon and 1 p.m. to 4 p.m.

TUESDAY, MARCH 10, 1981

9 a.m. to 12 noon; 1 p.m. to 3 p.m. & 3 p.m. to 8 p.m.

at which time, upon request of any person, or his or her agent, who is assessed on this tax roll and if sufficient cause is shown, this Board of Review will correct the assessment on the property in question in a manner that will, in their judgment, make the valuation relatively just and equal. The assessment tax roll, after being reviewed and approved by the Board of Review, will be the assessment roll of LIMA TOWNSHIP for the year 1981.

The County Board of Commissioners of Washtenaw County has proposed the following ratios for the year 1981: Agriculture, 46.49; Commercial and Industrial, 48.44; Residential, 43.07; Developmental, 46.49.

LEILA C. BAUER, Supervisor

Dated: Feb. 7, 1981.

President Ritter informed the Council, that according to the Zoning Ordinance, the Planning Commission is the only review board over site plans. Mr. Ritter informed the Council that this procedure should be changed so

that the Village Council has control.

Motion by Kanten, seconded by Sweet, to adjourn. Roll call: Ayes all. Motion carried. Meeting adjourned. Frederick A. Weber, Temporary Clerk.

## VILLAGE OF CHELSEA

### NOTICE OF BUDGET HEARING

A public hearing will be held in the Village Council Chambers, Tuesday, March 3, 1981, beginning at 7:30 p.m. to consider the 1981-82 Budget.

A copy of the budget is available for public inspection in the Office of the Village Administrator, 104 E. Middle Street, Chelsea.

## VILLAGE OF CHELSEA

Rose M. McGibney, Clerk

## DEXTER TOWNSHIP BOARD OF REVIEW

Notice is hereby given to all persons liable to assessment for taxes in the

### TOWNSHIP OF DEXTER

County of Washtenaw, State of Michigan

That the Assessment Roll of said Township as prepared by the undersigned will be reviewed by the Board of Review on Tuesday, March 3, 1981.

Appeals and conferences with taxpayers will be heard at

### DEXTER TOWNSHIP HALL

6880 Dexter-Pinckney Road, on

Monday, March 9, 1981

from 2 p.m. to 8 p.m.

Wednesday, March 11, 1981

from 2 p.m. to 8 p.m.

and on

Thursday, March 12, 1981

from 8 a.m. to 10 a.m.

at which time the Board of Review will be in session. Upon request of any person who is assessed on said tax roll or of his or her agent and upon sufficient cause being shown, said Board of Review will correct the assessment as to such property in such manner as will in their judgment make the valuation just and equal.

Such assessment tax roll as reviewed and approved by said Board of Review will be the assessment roll of said Township of Dexter for the year 1981.

Tentative Ratios are: Agriculture 45.85, factor 1.0905; Commercial 51.87, factor .9639; Industrial 44.96, factor 1.1121; Residential 43.94, factor 1.1379; Developmental 45.85, factor 1.0909.

ARLENE HOWE, Supervisor

Dated: Feb. 7, 1981.

## LYNDON TOWNSHIP BOARD OF REVIEW

Notice is hereby given to all persons liable to assessment for taxes in the

### TOWNSHIP OF LYNDON

County of Washtenaw, State of Michigan

That the Assessment Roll of said Township as prepared by the undersigned will be reviewed by the Board at

### LYNDON TOWNSHIP HALL

Corner of Old M-52 and North Territorial Road, on

TUESDAY, MARCH 3, 1981

from 9 a.m. to 12 Noon and 1 p.m. to 4 p.m.

Appeals and conferences with taxpayers will be heard on

MONDAY and TUESDAY

MARCH 9-10, 1981

from 9 a.m. to 12 noon and 1-4 p.m.

and

MONDAY, MARCH 16, 1981

from 7 p.m. to 10 p.m.

at which time upon request of any person who is assessed on said tax roll or of his or her agent and upon sufficient cause being shown, said Board of Review will correct the assessment as to such property in such manner as will in their judgment make the valuation relatively just and equal. Such assessment tax roll as reviewed and approved by said Board of Review will be the assessment roll of said Township of Lyndon for the year 1981.

The County Board of Commissioners of Washtenaw County has proposed the following starting ratios for Lyndon Township for the year 1981: Real Property: Agriculture Ratio, 47.50, factor, 1.05; Commercial, Ratio, 49.04, factor 1.02; Industrial, Ratio, 39.78, factor, 1.26; Residential Ratio, 44.45, factor, 1.13; Developmental, Ratio, 47.50, factor, 1.05; Personal Property: Industrial and Utility, Ratio, 50.00, factor, 1.00.

JOHN D. HURD, Supervisor

Dated: Feb. 12, 1981.



### Hoffman Tire & Service

7 miles west of Chelsea

13660 E. Michigan

Grass Lake 522-8542

CERTIFIED IN TUNE UPS & ENGINE REPAIR

## OPEN SUNDAYS

10 a.m. to 2 p.m.

MAIN STORE ONLY

1414 S. MAIN ST., CHELSEA

Phone 475-9106

The PARTS

PEDDLER

AUTO SUPPLY STORES

## NOTICE FREEDOM TOWNSHIP PROPERTY OWNERS

The Washtenaw County Equalization Dept. has indicated that they will impose various factors (an overall increase in valuation) on property located in Freedom Township for the year 1981.

To preclude the use of these factors which would be unfair to some, all property in Freedom Township has been re-assessed. Their study indicated that agricultural class properties were 12% low and residential class properties were 6% low. Individual adjustments, some of which are greater and some less than that indicated, have been made in a continuing effort to achieve uniformity and equity within the Township.

The Freedom Township Board of Review will meet at the Township Hall on March 9, 1981 from 9 a.m. to 4 p.m. and on March 10, 1981 from 9 a.m. to 4 p.m., also 7 p.m. to 9 p.m., during which time the 1981 assessment roll will be available for public inspection.

## FREEDOM TOWNSHIP

David J. Meinhart, Supervisor - Assessor



# Church Services

**FIRST UNITED METHODIST CHURCH**  
The Rev. Marvin H. McCallum, Pastor  
Wednesday, March 4—  
12:00 p.m.—Lenten Study Class at the Crippen Building.  
3:30 p.m.—Praise Choir.  
6:45 p.m.—Rhythmic Choir.  
7:00 p.m.—Ash Wednesday service—Communion.  
8:15 p.m.—Chancel Choir.  
Thursday, March 5—  
7:00 p.m.—"Foundation Class" in Manchester.  
Friday, March 6—  
9:30 a.m.—Church Women United White Breakfast at the First Congregational church.  
Sunday, March 8—  
9:00 a.m.—Worship service with Communion—Crib nursery.  
9:45 a.m.—Church school for grades 11 and 12.  
10:00 a.m.—Worship service with Communion. Crib nursery for infants up to the age of two and church school for children ages two through five. Kindergartners through fifth graders will attend the worship service until the second hymn is sung. Students in grades six through 10 and the Adult Class will meet following the close of the worship service.  
11:55 a.m.—All church school classes will be dismissed.  
5:30 p.m.—Confirmation class. Junior High UMYF.  
7:00 p.m.—Rhythmic Choir.  
Monday, March 9—  
6:45 p.m.—Youth Bell Choir.  
7:30 p.m.—Carroll Choir.  
7:30 p.m.—Council on Ministries.

**COVENANT CHURCH**  
Dr. R. J. Ratliff, Pastor  
K. of C. Hall, W. Old US-12  
Every Sunday—  
3:00 p.m.—Sunday School.  
4:00 p.m.—Worship service.

**MT. HOPE BIBLE CHURCH**  
12884 Trist Rd., Grass Lake  
The Rev. R. H. Brandow, Pastor  
Every Sunday—  
10:00 a.m.—Sunday school.  
11:00 a.m.—Morning worship.  
7:00 p.m.—Evening service.  
Every Wednesday—  
7:00 p.m.—Bible study.

**SOUTHWEST CHURCH OF THE NAZARENE**  
14555 Holmes Rd. (M-106)  
Fred Bridge, Pastor  
Every Sunday—  
10:00 a.m.—Sunday school.  
11:00 a.m.—Morning worship.  
6:00 p.m.—Evangelical Service.  
Every Wednesday—  
7:00 p.m.—Bible Study and Prayer Meeting.

**ST. PAUL UNITED CHURCH OF CHRIST**  
The Rev. Erwin R. Koch, Pastor  
Tuesday, March 3—  
7:30 p.m.—Memorial and Gifts Committee.  
Wednesday, March 4—  
4:15 p.m.—Youth Choir rehearsal.  
7:30 p.m.—Ash Wednesday Communion service. Sermon: "To A Lonely Place."  
8:30 p.m.—Board of Elders.  
8:30 p.m.—Chancel Choir.  
Thursday, March 5—  
9:30-11:00 a.m.—Bible Study in the lounge. Theme: "The Sermon on the Mount."  
6:00 p.m.—XYZ's pot-luck.  
Friday, March 6—  
9:30 a.m.—World Day of Prayer breakfast. Congregational church.  
Sunday, March 8—  
First Sunday in Lent. Lenten Sermon Series: "Searching the Mind of Christ."  
9:00-10:30 a.m.—Church school.  
9:00 a.m.—7th grade conference.  
9:15 a.m.—8th grade conference.  
10:30 a.m.—Worship service. Sermon: "Jesus on Power."  
Nursery provided for infants and toddlers.  
6:00 p.m.—Junior High Youth Fellowship, progressive dinner. Meet at church first.  
Monday, March 9—  
7:30 p.m.—Church Council.

**NORTH LAKE UNITED METHODIST CHURCH**  
The Rev. John Elliott, Pastor  
Every Sunday—  
10:00 a.m.—Worship service. Nursery provided for children up to second grade.

**NORTH SHARON BIBLE CHURCH**  
Sylvan and Washburne Rds.  
The Rev. William Enslin, Pastor.  
Every Sunday—  
10:00 a.m.—Sunday school.  
11:00 a.m.—Worship service.  
8:00 p.m.—Senior High Youth meeting. Youth choir.  
7:00 p.m.—Evening worship service. (Nursery available.) All services interpreted for the deaf.  
Every Wednesday—  
7:00 p.m.—Bible study and prayer meeting. (Nursery available.) Bus transportation available. 428-7222.

**CHELSEA BAPTIST CHURCH**  
337 Wilkinson St.  
The Rev. Thode B. Thodeson, Pastor  
Every Sunday—  
10:00-10:45 a.m.—Church school.  
10:50 a.m.—Morning worship.  
11:20 a.m.—Junior church school.  
6:00 p.m.—Evening fellowship.  
Every Wednesday—  
7:00 p.m.—Mid-week Bible study and prayer.

**FAITH EVANGELICAL LUTHERAN CHURCH**  
9575 North Territorial Rd.  
The Rev. Mark Porinsky, Pastor  
Tuesday, March 3—  
7:30 p.m.—Inquirers XIII.  
Wednesday, March 4—  
9:45 a.m.—Bible brunch at Stockwells.  
7:30 p.m.—8:10 p.m.—Lent I.  
Friday, March 6—  
7:30 p.m.—Grade school basketball v. Redeemer at Copeland.  
Sunday, March 8—  
8:45 a.m.—Sunday school, Adult Class.  
10:00 a.m.—Worship service. Sermon on Matthew 4:8.  
11:00 a.m.—Coffee hour.  
Monday, March 9—  
7:00 p.m.—Usher organization and training.  
8:00 p.m.—Council.

**OUR SAVIOR LUTHERAN CHURCH**  
1515 S. Main, Chelsea  
The Rev. Franklin H. Giebel, Pastor  
Broadcast Sundays—  
Watch "This is the Life."  
7:00 a.m.—WXYZ, channel 7, Detroit.  
"The Church of the Lutheran Hour."  
8:35 a.m.—WIBM, 1450 AM, Jackson.  
12:30 p.m.—WYFC, 1520 AM, Ypsilanti.  
Every Sunday—  
9:00 a.m.—Sunday school.  
10:30 a.m.—Morning Worship.  
Every Monday—  
3:45 p.m.—7th grade confirmation.  
6:30 p.m.—8th grade confirmation.  
Every Thursday—  
7:00 p.m.—Adult Information Class.

**ZION LUTHERAN CHURCH**  
Corner of Fletcher and Waters Rds.  
The Rev. John R. Morris, Pastor  
Tuesday, March 3—  
4:00 p.m.—Joy-makers.  
7:45 p.m.—Martha.  
Wednesday, March 4—  
1:30 p.m.—Lydia.  
7:30 p.m.—Lenten devotional.  
8:30 p.m.—Senior Choir.  
Friday, March 6—  
World Day of Prayer, Congregational church.  
Saturday, March 7—  
9:00 a.m.—Youth Instruction.  
Sunday, March 8—  
9:00 a.m.—Sunday school and adult inquirer class.  
10:15 a.m.—Worship service.  
2:00 p.m.—Luther League.

**WATERLOO VILLAGE UNITED METHODIST CHURCH**  
8118 Washington St.  
The Rev. Larry Nichols and The Rev. David Goldsmith, Pastors  
Every Sunday—  
10:00 a.m.—Sunday school.  
11:15 a.m.—Worship service.  
IMMANUEL BIBLE CHURCH  
145 E. Summit St.  
The Rev. Ron Little, Pastor  
Every Sunday—  
9:45 a.m.—Sunday school, nursery provided.  
11:00 a.m.—Morning worship, nursery provided.  
6:00 p.m.—Evening worship.  
Every Wednesday—  
7:00 p.m.—Family hour, prayer meeting and Bible study.

**ST. BARNABAS EPISCOPAL CHURCH**  
The Rev. Fr. Jerrold F. Beaumont, B.S.P.  
Every Sunday—  
10:00 a.m.—Holy Communion first, third and fifth Sundays.  
10:00 a.m.—Morning prayer, second and fourth Sundays.  
Church school and nursery every Sunday. The first Sunday of the month is a Family Worship Service. Coffee hour follows all Sunday services. Bishop's Committee meets on the first Sunday of every month. Episcopal Church Women meet on the third Sunday of the month.  
Every Wednesday—  
7:30 p.m.—Holy Communion.

**CHURCH OF CHRIST**  
13661 Old US-12, East  
Evangelist Robert B. Murray  
Every Sunday—  
7:30 a.m.—Radio program—WNRS in Saline.  
9:30 a.m.—Bible study.  
10:30 a.m.—Worship service. Nursery available.  
6:00 p.m.—Worship service.  
Every Wednesday—  
7:30 p.m.—Bible study classes for all ages.

**FIRST UNITED METHODIST Parks and Territorial Rds.**  
The Rev. Larry Nichols and the Rev. David Goldsmith, Pastors  
Every Sunday—  
9:15 a.m.—Morning worship.  
10:00 a.m.—Sunday school.

**CHURCH OF JESUS CHRIST OF LATTER-DAY SAINTS (Mormon)**  
Chelsea Branch-Rebekah Hall  
Every Sunday—  
9:30 a.m.—Sacrament.  
10:50 a.m.—Sunday school.  
11:40 a.m.—Priesthood.

**FIRST ASSEMBLY OF GOD**  
The Rev. Richard Coury, Pastor  
Every Sunday—  
9:45 a.m.—Sunday school.  
11:00 a.m.—Worship service.  
6:00 p.m.—Evening worship.  
Every Wednesday—  
7:00 p.m.—Christ's Ambassadors. Missionettes. Bible Meditation and prayer.

**CONGREGATIONAL CHURCH (United Church of Christ)**  
The Rev. Carl Schwarm, Pastor  
Every Sunday—  
10:30 a.m.—Worship. Nursery provided for pre-schoolers.  
Second Thursday—  
1:00 p.m.—Women's Fellowship.  
Weekly Bible study—As scheduled in Sunday bulletin.  
Youth groups—As scheduled in Sunday bulletin.

**CHELSEA FREE METHODIST CHURCH**  
Meetings at St. Barnabas Episcopal Church 20500 Old US-12  
Mearl Bradley, Pastor  
Wednesday, March 4—  
3:30 p.m.—Children's Choir.  
7:30 p.m.—Growth Group II and III.  
Thursday, March 5—  
7:00 p.m.—Super Thursday—CYC, FMY, Jr. High.  
Sunday, March 8—  
3:45 p.m.—Sunday school.  
5:00 p.m.—Worship service.

**ST. JOHN'S UNITED CHURCH OF CHRIST**  
Rogers Corners  
The Rev. Gary Kwiatec, Pastor  
Every Sunday—  
10:30 a.m.—Worship and Sunday school.

**GREGORY BAPTIST CHURCH**  
The Rev. David Brinkman, Pastor  
Every Sunday—  
9:45 a.m.—Sunday school.  
11:00 a.m.—Morning worship.  
6:00 p.m.—Young people.  
7:00 p.m.—Evening worship.

**CHELSEA CHRISTIAN MEN'S FELLOWSHIP PRAYER BREAKFAST (Non-Denominational)**  
Chelsea Hospital Cafeteria.  
First Saturday Each Month—  
8:00 a.m.—Breakfast.  
8:30-10:00 a.m.—Program.

**CHELSEA HOSPITAL MINISTRY (Non-Denominational)**  
Every Sunday—  
10:00 a.m.—Morning service, Chelsea Community Hospital Cafeteria.

**METHODIST HOME CHAPEL**  
Chaplain Ira Wood  
Every Sunday—  
8:45 a.m.—Worship service.

**ST. JACOB EVANGELICAL LUTHERAN CHURCH**  
The Rev. Andrew Bloom, Pastor  
12501 Riethmiller Rd., Grass Lake  
Every Sunday—  
9:00 a.m.—Sunday school.  
10:15 a.m.—Divine services.

**ST. JOHN'S EVANGELICAL AND REFORMED CHURCH (United Church of Christ)**  
Francisco  
The Rev. Paul McKenna, Pastor  
Every Sunday—  
10:30 a.m.—Sunday school and worship service.  
First Sunday of every month—Communion.

**ST. MARY CATHOLIC CHURCH**  
The Rev. Fr. David Philip Dupuis, Pastor  
Every Saturday—  
5:00 p.m.—Mass.  
Confessions immediately following Mass on Saturday.  
Every Sunday—  
8 a.m., 10 a.m. and 12 noon—Mass.

**ST. THOMAS EVANGELICAL LUTHERAN**  
Ellsworth and Haab Rds.  
The Rev. Paul Puffe, Pastor  
Every Sunday—  
9:30 a.m.—Sunday school.  
10:45 a.m.—Worship service.

**BETHEL EVANGELICAL AND REFORMED CHURCH (United Church of Christ)**  
Freedom Township  
The Rev. Roman A. Reineck, Pastor  
Every Sunday—  
10:00 a.m.—Worship service.

**CHELSEA CHURCH OF THE UNCOMPROMISING WORD**  
11452 Jackson Rd.  
The Rev. Chuck Clemons, Pastor  
Every Sunday—  
10:00 a.m.—Sunday school.  
11:00 a.m.—Morning worship.  
6:30 p.m.—Evening worship.  
Every Wednesday—  
7:00 p.m.—Midweek prayer and Bible study.

**SALEM GROVE UNITED METHODIST CHURCH**  
3320 Notten Rd.  
The Rev. Ronald Brunger, Pastor  
Every Sunday—  
9:30 a.m.—Sunday school.  
10:30 a.m.—Worship service.

**FIRST UNITED PRESBYTERIAN CHURCH**  
Unadilla  
William D. Kuenzli, Pastor  
Every Sunday—  
9:45 a.m.—Sunday school.  
11:00 a.m.—Worship service.

## Area Pastors Join In Lenten Services

Our Savior Lutheran church, 1515 S. Main St. in Chelsea, begins the Lenten season with Ash Wednesday, March 3, at 7:30 p.m. Services will continue each Wednesday until the week before Easter when services will also be held on Maundy Thursday and Good Friday at 7:30 p.m. The public is invited to all services. As a special feature, four area pastors will be conducting the services, each speaking on different aspects of prayer. The Rev. Frank Giebel, pastor of Our Savior, will preach about the Lord's Prayer and about praying to know the truth of God's Word. The Rev. Terry Nelson, pastor of Cross of Glory church, a new mission in Whitmore Lake, will preach about praying to be kept in God's name and praying for protection from Satan and the

world. The Rev. Gene Wyssmann, pastor of Trinity Lutheran church in Pinckney, will preach on praying for the unity of all believers with each other and for their unity with Christ. The Rev. Paul Puffe, pastor of St. Thomas Lutheran church on Ellsworth Rd., will preach about praying to give glory to the Son of God. Each sermon is based on actual prayers taught and used by Jesus. To encourage Christian fellowship, there will be a pot-luck Agape Meal at 6:30 p.m. before the Ash Wednesday service, and a fellowship hour with refreshments after each of the other services in the series. This will give church members and friends an opportunity to get to know each other better and to meet the pastors involved.

## Guest Speakers At Baptist Church

The Rev. and Mrs. Ken McComber will be guest speakers during the 10:50 a.m. service at Chelsea Baptist church, 337 Wilkinson St., Sunday, March 8, according to Pastor T. B. Thodeson. The McCombers have been missionaries to the Far East since 1950, serving in Malaysia, Indonesia, Singapore and the Philippines. While serving in the Philippines during one term, they served on the staff of Immanuel Bible Institute, Cebu City, as President and Dean of Education.

While in Indonesia, they organized a Bible School with 40 attending students. They also directed the International Correspondence Institute program with 18,000 enrollees. In addition, the McCombers were also responsible for the opening of a bookstore stocked with Christian reading and teaching materials. While home on furlough, they are attending Michigan State University, completing work on their individual master's degrees in curriculum and instruction. Ken McComber is a graduate of Central Bible College, Springfield, Mo. He has done graduate work at Wheaton College, Ill., at the University of the Philippines and at the Assembly of God Graduate School at Springfield, Mo. Margaret McComber graduated from Grand Valley State College, Allendale, and has pursued graduate studies at both the University of the Philippines and the Assembly of God Graduate School.

The couple is planning to return to serve on the staff of the Far

East Advanced School of Theology which serves many churches throughout the Far East and Pacific Island groups. During their guest lecture, the McCombers will present a special film regarding the Indonesian revival that is growing at the rate of 25 percent per year. The congregation of the Chelsea Baptist church welcomes the community to attend this special church event.

## Musical Group Will Appear at Immanuel Church

Immanuel Bible church, Summit St., will present the Toney Brothers Quartet of Texas, Monday evening, March 10. Chelseaites Robert Schneider will both sing and accompany the group on piano. The community is invited to attend this special evening, beginning at 7 p.m.

The proportion of blacks in private household occupations declined dramatically during the decade of the 1970s according to "Perspectives on Working Women: A Databook," of the U.S. Department of Labor's Bureau of Labor Statistics.

## HOME - AUTO - BUSINESS - LIFE SPRINGER AGENCY, INC.

(formerly the Mayer Agency)

Your Local Independent Insurance Agency providing dependable protection and prompt claim payment through 10 of the nation's leading insurance companies.



Sheridan W. Springer  
Ruth Devine

115 Park St., Chelsea, Mich.  
475-8689

Elaine Yocum

Donald S. Peck  
Marilyn Holt

## St. Paul Plans Lenten Services

St. Paul United Church of Christ will begin the Lenten season on Ash Wednesday, March 4, with a service of Holy Communion at 7:30 p.m. A brief meditation by the pastor is entitled "To A Lonely Place." The Chancel Choir, under the direction of Mrs. Pat Stirling, will sing. Two special mid-week Lenten services have been planned, involving the sister congregations, First Congregational and St. Paul. On Wednesday, March 18, at 7:30 p.m., a union service will be held at St. Paul UCC, with the Rev. Carl Schwarm speaking on the topic, "God's Will," based on the phrase in the Lord's Prayer, "Thy will be done, on earth as it is in heaven." The Chancel Choir will sing and a fellowship hour with refreshments will follow. On April 1, the service will be held at First Congregational at 7:30 p.m. where the Rev. Erwin Koch will speak on "Forgiveness," again based a

## St. Barnabas Plans Pancake Supper For Shrove Tuesday

St. Barnabas Episcopal church will commemorate Shrove Tuesday with a traditional Pancake Supper sponsored by the Senior Youth Group on Tuesday, March 3. Dinner will be served between the hours of 5 p.m. and 7 p.m. and will be funded through a "free will offering."

The Pancake Supper will launch the Lenten season at St. Barnabas this year. Other Lenten observances will include weekly evening services on Wednesdays at 7:30 p.m. to be followed by a series of studies in Holy Scripture. The weekly evening services will begin on Ash Wednesday, March 4, and the study series will begin following the service on March 11 and continue through April 8.



for:

REUNIONS  
RECEPTIONS  
CHURCH, OFFICE and  
BIRTHDAY PARTIES  
... every special event

Zemke Operated Machines  
(313) 662-1771

## A Friendly Church



Active Christian fellowship in church-school, worship, music and caring.

WORSHIP SCHEDULE:  
Service's 9:00 and 10:00 am.  
Church School for all ages.

For complete schedule call  
the church office at 475-8119

First United  
Methodist Church

128 Park Street  
Chelsea

Rev. Marvin McCallum, Pastor



Ads  
Taken  
Until  
Noon  
Monday

# PUT IT IN THE LIFE FOR RESULTS

Just  
Phone  
475-1371

Washtenaw County's Busy Marketplace

Quick, Economical Results . . . Give 'em a try!

## Automotive 1

### Special Clearance Sale

#### Chrysler Sno Runners

List Price ..... \$735  
Discount ..... \$100  
SALE PRICE ..... \$635

### SPECIAL SALE

#### NEW 4-WHEEL DRIVES

NEW '79 W-150 pick-up, 4x4, 360, auto, p.s., p.b., 10.00x15 tires, spoke wheels, etc. List \$6832. Sale Price ..... \$6995

NEW '79 TRAILDUSTER, 4x4, 360, auto, p.s., p.b., Meyers snow plow, etc. List \$10,203. Sale Price ..... \$7995

NEW '80 DODGE 3/4-ton pick-up, 4x4, 360, auto, p.s., p.b., dual fuel tanks, etc. List \$10,408. Sale Price ..... \$7995

NEW '80 RAMCHARGER, 4x4, 318, auto, p.s., p.b., Meyers snow plow, etc. List \$10,793. Sale Price ..... \$7995

7% Interest Rebate applies to all 1981 cars and trucks except Imperial. Ends Feb. 28, 1981

### Used Trucks

'73 DODGE C-800 tractor, 413, 5-speed trans, 2-speed rear axle, air brakes, low mileage ..... \$1995

### Quality Used Cars

'79 HORIZON TC-3 2-dr. auto., p.s., p.b., sport pkg., low mileage ..... \$4295

'79 CAMERO Berlinetta, 6 cyl., auto, p.s., p.b., air, AM/FM ..... \$5495

'78 MERCURY Marquis 4-dr. V-8, auto, p.s., p.b., air, mileage. One owner ..... \$3395

'76 VOLARE Premier wagon, 6-cyl., auto, p.s., p.b. .... \$1795

'76 VOLARE 4-dr. 6-cyl., auto, p.s. Good transportation ..... \$1495

'76 FIREBIRD Esprit, 350, auto, p.s., p.b., air, AM/FM ..... \$2495

### Village

#### Motor Sales, Inc.

CHRYSLER - DODGE PLYMOUTH - DODGE TRUCKS  
Phone 475-8661  
1185 Manchester Rd., Chelsea  
Hours: 8 a.m. to 5:30 p.m.  
Tues. thru Fri. Until 8 Monday  
Saturday 9 to 12 x38tf

SURPLUS JEEPS - Value \$3,196 sold for \$44. Call (313) 742-1143 ext. 228 for information on how to purchase bargains like this. x27tf

TRANSMISSION WORK and engine repair - Guaranteed, professional, rebuild automatic transmission installed complete for \$225. Clutch jobs, transmission and engine installation and repair available. U.S. cars only. Call Byron at 429-7346 from noon-10 p.m. leave message. x39

DODGE PICK-UP, 1969, 3/4-ton, 4-speed 318 cu. in., runs good, new tires, covers, \$650 or best offer. 1966 Plymouth Valiant Dne buggy, \$125 or best offer. Ph. 475-7568, ask for Jerry. 41-3

'80 CHEVY 3/4-ton van, low mileage, rustproof. Ph. 475-9324. 39-2

'80 CHEVY 3/4-ton van, low mileage, rustproof. \$5200. Ph. 475-9324. 39-2

'93 CHEV. PICK-UP - Covered. Runs. \$200. Ph. 475-7938 after 4 p.m. x39

## Automotive 1

### BODY SHOP

COMPLETE FULL TIME Estimates Available

#### PALMER FORD

222 S. Main 475-1301 40tf

### PALMER FORD

Now is the Time To Save!

### Just Arrived

1975 BUICK Century Station Wagon - What a Car! Only 45,000 one owner miles. A nicer car can not be found.

### Cars

1980 LTD Crown Victoria (Demonstrator-2)

1980 LTD Squire Wagon (Demonstrator)

1980 MUSTANG Ghia 3-dr. (Demonstrator)

1980 T-BIRD

1979 PINTO 3-dr.

1979 FAIRMONT Futura 2-dr.

1979 MUSTANG 2-dr.

1979 MERCURY Zephyr 2-dr.

1978 PLYMOUTH Horizon

1978 PINTO 3-dr.

1978 CHEVETTE 5-dr.

1978 FAIRMONT 2-dr.

1977 GRANADA

1977 CAMERO

1977 DODGE Aspen 4-dr.

1972 DODGE

1979 CHEV-C10

1979 FORD Bronco

1978 COURIER

1978 COURIER

1978 COURIER

1978 COURIER

1978 COURIER

1978 COURIER

1978 COURIER

1978 COURIER

1978 COURIER

1978 COURIER

1978 COURIER

1978 COURIER

1978 COURIER

1978 COURIER

1978 COURIER

1978 COURIER

1978 COURIER

1978 COURIER

1978 COURIER

1978 COURIER

1978 COURIER

1978 COURIER

1978 COURIER

1978 COURIER

1978 COURIER

1978 COURIER

1978 COURIER

1978 COURIER

1978 COURIER

1978 COURIER

## Automotive 1

### Demos

'81 IMPERIAL. White with saddle leather interior. Fully equipped. SAVE

'80 VOLARE wagon, 225, auto., p.s., p.b., air, cruise, luggage rack. SAVE

'80 LE BARON Medallion 4-dr. 6-cyl., auto., p.s., p.b., cruise, illi, stereo, 8-track, power locks & trunk lid. SAVE

'81 CORDOBA Crown, 6-cyl., auto., p.s., p.b., air, stereo, leather. \$7895

'80 MIRADA 318, auto., p.s., p.b., air, stereo cassette, cruise \$7795

'80 GRAN FURY Salon 4-dr. 318, auto., p.s., p.b., air, stereo \$7395

### Village

#### Motor Sales, Inc.

CHRYSLER - DODGE PLYMOUTH - DODGE TRUCKS

Phone 475-8661

1185 Manchester Rd., Chelsea

Hours: 8 a.m. to 5:30 p.m.

Tues. thru Fri. Until 8 Monday

Saturday 9 to 12 x38tf

### Complete

#### Body Shop

Service

FREE ESTIMATES

Contact Walter Steinhlilb

Formerly of Westland Collision

### Faist - Sprague

1185 Manchester Rd., Chelsea

Hours: 8 a.m. to 5:30 p.m.

Tues. thru Fri. Until 8 Monday

Saturday 9 to 12 x38tf

### Motorcycles

'72 HONDA 350. On/off road bike. Ph. 475-1490 or 475-9426. x6-2

### Farm & Garden

NEW SUPER MIX Hog Grower and Finisher. 100 lbs., \$9.65. Cole's Elevator Co., Inc. x41-8

SELECTED mixed flower seeds. \$1.00 per lb. bulk amounts. Cole's Elevator Co., Inc. x41-8

MICHIGAN CERTIFIED SEED - Four varieties, soy beans, Mariner seed oats treated Vitavax 200. Brabec Farms, Britton, Mich. 49229. 517-451-4010 or 517-423-5663. x42-7

HAY AND STRAW FOR SALE - 1st and 2nd cutting alfalfa, clover hay, wheat and oat straw. You pick-up or we deliver. Charles Robison, Saline, Ph. (313) 429-2755 Monday thru Friday after 5 p.m., anytime week-ends. x40-3

OAK FENCE POSTS - Taper sawed \$2 ea. Ph. 475-2283. x40-2

FARMERS - Now taking orders for Vermont alfalfa, pre-inoculated, full 6-lb. bushels; also, Brome and clover seeds, and northern grown Mariner seed oats. Cole's Elevator Co., Inc., Gregory (313) 498-2735. x48-10

WANTED - Manure. Will haul for free, clean stalls and lots. Also wanted, trees to cut for firewood. Have rear-end tiller, would till garden in exchange or whatever. Ph. 475-7286. x39

TWO NEW IMPROVED horse feeds to choose from. Super Mix and Pleasure Mix. Both made with pure cane molasses. Cole's Elevator Co., Inc., Gregory (313) 498-2735. x48-10

### Recreation Eqt. 3

'73 CAMBRIDGE mobile home. Double wide, 24' x 65', 3-bedrooms, 1 1/2 baths, central air, shed, 8' x 20' porch. Ph. (517) 596-2354. 39-2

BOAT FOR SALE - 14' Crosby, 40 h.p. Johnson (may need some work) electric ignition, two tanks. White fiberglass exterior, red wood interior, bench seats. Trailer. Best offer. Ph. 475-1371. x21tf

### For Sale

#### CARPETING

Discontinued numbers, ends of rolls. In many colors and sizes at cut rate prices. Nearly 100 pieces to select from.

### MERKEL BROS.

ASHLEY WOODSTOVES - Hackney Hardware, Dexter. Ph. 426-4039 x21tf

FIREWOOD CUT and split. Two sizes, face cords and full cords, delivered. Ph. 428-8229. x25tf

SEE US for transit mixed concrete. Klumpp Bros. Gravel Co. Phone Chelsea 475-2530, 4920 Loveland Rd., Grass Lake, Mich. x40tf

WEDDING STATIONERY - Prospective brides are invited to see our complete line of invitations and wedding accessories. The Chelsea Standard, 300 N. Main. Ph. 475-1371. 8tf

SURPLUS JEEP - Value \$3,196. Sold for \$44. Call 312-742-1143. Ext. 1328 for info. on how to purchase bargains like this! x42-4

WHEEL-HORSE GARDEN TRACTOR, C-141, automatic with rototiller, cultivator, lights, and center blade. All like new. Asking \$2,400 for all. Call after 6 p.m. or all day Tuesday, 475-8575. x36tf

FOR SALE - One 2-piece couch, approximately 7 ft. long, \$50; double/queen maple Early American bed frame, \$75. Ph. 475-9520. x38tf

## CLASSIFIED

### ADVERTISING RATES

20 words or less ..... \$1.00  
Over 20 words, 5c per word  
(When payment accompanies order; add 75c if charged)

CARD OF THANKS  
50 words or less ..... \$2.50  
Over 50 words 5c per word  
(When payment accompanies order; add 75c if charged)

Deadline for ads in classified section is 4 p.m. Saturday. Copy received between 4 p.m. Saturday and noon Monday may appear under a separate heading on another page.

\$1.00 charge for tear-sheets and duplicate invoice on any ad under \$5.00.

Any change or cancellation in advertising made after 4 p.m. Saturday may not appear in that week's issue.

All advertisers should check their ad the first week. The Standard cannot accept responsibility for errors on ads received by telephone but will make every effort to make them appear correctly. Refunds may be made only when erroneous ad is cancelled after the first week that it appears.

### For Sale

ARE YOU LOOKING for a special kind of firewood at a fair price? We deliver, 14 years experience in wood marketing. Call 517-522-8354, 517-522-4240, or 517-782-1907. x43-10

PRE-BAGGED COAL - 25 lbs. \$2 per bag. Great for fireplace and wood-burning stove. Ph. 475-9372. x45-10

IBM CORRECTING SELECTRIC II, under transferable service agreement, excellent condition. Law offices of Kitchen, Schmerberg and Ward. Ph. 426-4695 between 9 a.m. and 5 p.m. x40-4

FOR SALE - Stereo-record holder combination and TV stand. Ph. 475-8508. x49-2

TAKE soil away the Blue Lustre way from carpets and upholstery. Rent electric shampooer, \$2. Chelsea Hardware. 39

CLEAN, soft, fluffy dry carpet. That's what you get when you clean them with HOST. Rent the HOST machine. Merkle Home Furnishings, Chelsea 475-8621. x39

MOVING SALE - Ford 8N tractor with front end loader, 2-bottom plow, 2-section drag, chains, 250 gal. gas tank and antique hay rake. 5 h.p. 1980 Murray riding lawnmower. Gamble's 5 h.p. rototiller. Upright piano, needs tuning. Kenmore country range gas stove, 1974 Toyota Corona, excellent condition. 1974 Pinto, good condition. Needs some work. 1978 Plymouth Arrow, good condition. Call 475-8596, persistently. x39

### Auction

#### SHERIFF'S AUCTION

Date: March 9, 1981.  
Time: 10 a.m.-12 noon.  
Place: Able's Towing, 221 N. Lincoln, Ypsilanti, Mich.  
Vehicle:  
'72 Plymouth. VIN VL29C2B256342. 39

Date: March 9, 1981.  
Time: 10 a.m.-12 noon.  
Place: Frisco's Towing, 2220 E. Michigan Ave., Ypsilanti, Mich.  
Vehicle:  
'75 Chevrolet. VIN 1V77A5U177681. 39

Date: March 9, 1981.  
Time: 10 a.m.-12 noon.  
Place: Stoney Creek Rd., Ypsilanti, Mich.  
Vehicle:  
'70 AMC. VIN A0A060E129643. 39

Date: March 9, 1981.  
Time: 10 a.m.-12 noon.  
Place: Stoney Creek Rd., Ypsilanti, Mich.  
Vehicle:  
'74 Ford. VIN 4X11X115689. 39

Date: March 9, 1981.  
Time: 10 a.m.-12 noon.  
Place: Stoney Creek Rd., Ypsilanti, Mich.  
Vehicle:  
'73 AMC. VIN A3C797H379757. 39

Date: March 9, 1981.  
Time: 10 a.m.-12 noon.  
Place: Stoney Creek Rd., Ypsilanti, Mich.  
Vehicle:  
'68 Chevy. VIN CS148F102509. 39

### SHERIFF'S AUCTION

Date: March 9, 1981.  
Time: 10 a.m.-12 noon.  
Place: Westgate Towing, 2343 Dexter Rd., Ann Arbor, Mich.  
Vehicle:  
'75 Chevy. VIN 1H57H5B536448. 39

Date: March 9, 1981.  
Time: 10 a.m.-12 noon.  
Place: Westgate Towing, 2343 Dexter Rd., Ann Arbor, Mich.  
Vehicle:  
'74 Ford. VIN 6W87A1F257193. 39

Date: March 9, 1981.  
Time: 10 a.m.-12 noon.  
Place: Westgate Towing, 2343 Dexter Rd., Ann Arbor, Mich.  
Vehicle:  
'72 Chevy. VIN 1D36F2K514553. 39

Date: March 9, 1981.  
Time: 10 a.m.-12 noon.  
Place: Westgate Towing, 2343 Dexter Rd., Ann Arbor, Mich.  
Vehicle:  
'69 Chevy. VIN 136809K338699. 39

Date: March 9, 1981.  
Time: 10 a.m.-12 noon.  
Place: Westgate Towing, 2343 Dexter Rd., Ann Arbor, Mich.  
Vehicle:  
'74 Pontiac. VIN 2F37M4P202786. 39

Date: March 9, 1981.  
Time: 10 a.m.-12 noon.  
Place: Westgate Towing, 2343 Dexter Rd., Ann Arbor, Mich.  
Vehicle:  
'71 Oldsmobile. 39

Date: March 9, 1981.  
Time: 10 a.m.-12 noon.  
Place: Westgate Towing, 2343 Dexter Rd., Ann Arbor, Mich.  
Vehicle:  
'74 Honda. VIN SB02101143. 39

Date: March 9, 1981.  
Time: 10 a.m.-12 noon.  
Place: Westgate Towing, 2343 Dexter Rd., Ann Arbor, Mich.  
Vehicle:  
'77 Chrysler. VIN SS22N7R126867. 39

Date: March 9, 1981.  
Time: 10 a.m.-12 noon.  
Place: Westgate Towing, 2343 Dexter Rd., Ann Arbor, Mich.  
Vehicle:  
'74 Ford. VIN 402Y414993. 39

## Want Ad

### Classifications

Automotive ..... 1

Motorcycles ..... 1a

Farm & Garden ..... 2

Recreational Equipment ..... 3

For Sale (General) ..... 4

Auction ..... 4a

Garage Sales ..... 4b

Antiques ..... 4c

Real Estate ..... 5

Animals, Pets ..... 6

Lost & Found ..... 7

Help Wanted ..... 8

Situation Wanted ..... 8a

Babysitter ..... 9

Wanted To Rent ..... 10

For Rent ..... 11

Misc. Notices ..... 12

Bus. Services ..... 13

Financial ..... 14

Bus. Opportunity ..... 15

Card of Thanks ..... 16

In Memoriam ..... 17

Legal Notices ..... 18

Legal Notices ..... 18

Legal Notices ..... 18

Legal Notices ..... 18

Legal Notices ..... 18



# LITTLE WANT ADS! BIG PLUSES FOR BIG RESULTS!

## Help Wanted 8

SETTING UP INTERVIEWS for positions in expanding business. Income and hours flexible. Call weekdays, 9 to 5. Ph. 475-1684. x46-12

## DEPENDABLE PERSON

Student, senior citizen or early riser wanted to deliver DETROIT NEWS. Small morning route.

PHONE 971-6363

SUBSTITUTE BUS DRIVERS needed immediately for Manchester Community Schools, 710 E. Main St. Manchester, Ph. 428-7130. x39

## MACHINE REPAIRMAN

Jackson area manufacturing facility has an immediate opportunity.

Technician or equivalent required with experience in an industrial facility. We offer a competitive compensation and benefit package including 401k programs.

For consideration please apply at:

## Camshaft Machine Co.

717 Woodworth Rd. Jackson, Mich. 49204

An equal opportunity employer. x39

PEOPLE NEEDED various shifts, 20 to 40 hours a week. Transportation necessary, \$5.21 per hour. For more information call 434-3053 Monday thru Friday, 1 p.m. to 4 p.m. x40-2  
DEXTER A & W needs help for two afternoon shifts: from 11 a.m. to 4 p.m. and from 11 a.m. to 2 p.m. Apply in person, Dexter A & W, Dexter-Chelsea Rd. x39

## WAITRESS WANTED

## SCHUMM'S Restaurant

Chelsea  
Call 475-2020  
Ask for Ruth x39

## Situation Wanted 8a

EXPERIENCED HOUSEKEEPER at reasonable rates. Call 475-8727 after 6 p.m. x39-3

## Baby Sitter 9

BABYSITTING done in my state licensed home, 5 days a week, 6 to 6 daily. Call Linda at 475-1438. x39-8  
CHILD CARE in my home. Days, afternoons and evening shifts. Close to South School. Phone anytime, 475-8508. x40-2

## Wanted 10

WANTED — Crop land to rent for 1981 season. Cash paid in advance. Ph. (517) 764-0700. x16ff  
WILL PAY CASH for used trailers, motor homes, cars and pick-ups. Ph. 426-4007. x33ff

## For Rent 11

1-BEDROOM APARTMENT for rent in Chelsea. \$300 per month, all utilities included. Ph. 475-3397, weekdays after 4. x39

2-BEDROOM LAKEFRONT apartment. Bright, ideal for plants. Hardwood floors, no pets. \$275 per month. No security deposit. Ph. 428-7993. x40-2

FURNISHED 1st floor apartment, carpeted, full basement, yard. Married couple only. References required. Ph. 475-2018. x33ff

CHOICE 2-BEDROOM apartment, fully furnished, married couples only. References required. Ph. 475-2018. x33ff

OFFICE SPACE for rent on Main St. in downtown Dexter. Ph. 426-2522. x35ff

NEWLY REDECORATED, large 2-bedroom apartment in Stockbridge, \$265 per month, includes heat. Adults only, no pets. Ph. 475-7757. x36ff

OFFICE or small retail space in Stockbridge, \$175. Includes heat. Ph. 475-7757. x36ff

ROOMS for day, week or month. Excellent for the single man or retiree. Sylvan Hotel, Chelsea, Ph. 475-2911. x31ff

## For Rent 11

FOR RENT — Fair Service Center for meetings, parties, wedding receptions, etc. Weekdays or weekends. Contact John Wellnitz, phone 475-1518. x31ff

CAR RENTAL by the day, week, end, week or month. Full insurance coverage, low rates. Call Lyle Christwell at Palmer Motor Sales. 475-1301. x25ff

4 BEDROOM HOUSE, 12 miles south of Chelsea on Pleasant Lake Rd. Ph. (313) 428-7573. x50ff

FOR RENT — Chelsea Rod & Gun Club building for rent, for parties, meetings, receptions, etc. Contact Al Keizer, 475-8893, weekends and evenings. x8-26

OLDER FARMHOUSE, partly re-modeled, 3 bedrooms, gas-fired hot water heat, garden area, \$200 deposit. \$250 per month plus utilities. References required. Approximately 10 miles west of Chelsea. Ph. (517) 522-4125 or (517) 522-4354. x39ff

## Bus. Services 13

### All Types of Construction

Homes, garages, additions, masonry work, aluminum siding, kitchens, trim work, reshingling and pole barns.

### NEW LOCATION

### SLOCUM CONTRACTORS & BUILDERS

3770 Scio Church Rd. Ann Arbor Ph. 663-1168 x41-4

### All Insurance Needs

Call 665-3037

N. H. Miles, Allstate x39

### ALUMINUM WELDING

Welding of boats, outboard motors, lawn mower, and chain saw parts, etc. Also, other types of welding, brazing and burning — aluminum, steel, stainless steel, cast iron.

Dale Richardson

475-7462 x91ff

### APPLIANCE REPAIR

and

### INSTALLATION

Specializing in washers, dryers, dishwashers, ranges and disposals.

FAST SERVICE, SENSIBLE RATES Since 1959

ALL WORK GUARANTEED

TED LANE

PH. 663-2855 x40-3

### BOB'S CARPET SALES

Service and Quality Guaranteed

226 W. Michigan Ave. Ypsilanti, Mich.

Carpet and Other Floor Coverings

Ph. Ypsi 485-1713

483-3235, 9 to 6

or Gary Paxton, (313) 498-2537

9 a.m. to 10 p.m. x43-5

### J. R. CARRUTHERS

LICENSED RESIDENTIAL BUILDER

CUSTOM HOMES

ADDITIONS/FIREPLACES

PATIO'S

ROOFING/SIDING/REPAIRS

475-7234

CHELSEA x30ff

CARPENTRY WORK — Remodeling, siding, roofing, cement work, reasonable rates. Call Jim Hughes at 475-2079 or 475-2582. x14ff

## Bus. Services 13

C—ustom Built Homes

O—hl We Remodel too

U—can count on us

N—o Job Too Small

T—rim Inside and Out

R—ough-In Only If

Y—ou want to Finish

S—liding Aluminum, 5" Gutters

I—mmediate Attention

D—ALE COOK & CO.

E—stimates, Free

BUILDERS

Please Call

475-9153

DALE COOK

17ff

DRYWALL APPLICATION — Hanging, finishing, spray texture remodeling and new work a specialty. Ph. 665-3452. x34ff

### Floor Covering Is Our Business

TILE—SOLARIAN—HARDWOOD CARPET—INSTALLATION—REPAIRS

FREE ESTIMATES

Merkel

Home Furnishings

41ff

### JIM W. FRENCH

Small Dump Trucking

SAND - GRAVEL - STONE

Ph. Chelsea 475-1173

21ff

GET YOUR BICYCLE into shape for spring. Complete or partial overhaul. Call Jon at 475-1588 after 4:30 p.m. x40-4

### INCOME TAX

FARM, BUSINESS

OR PERSONAL

Started in Chelsea in 1953. Now in Ann Arbor.

CHELSEA BOOKKEEPING AND TAX SERVICE

Room 202

201 S. Main St., Ann Arbor

By Appointment

PHONE 769-0924

43-13

LOGWORKS — Locks repaired, rekeyed, keys made. Ph. 475-8328. x32ff

### INCOME TAX

and

ACCOUNTING

SERVICES

CALL 475-9597

After 5 p.m.

or write

P. O. Box 2626

Ann Arbor, Mich. 48106

x38ff

SAND GRAVEL

KLINK

EXCAVATING

Bulldozer — Backhoe

Road Work — Basements

Trucking — Crane Work

Top Soil — Demolition

Drainfield — Septic Tank

Trenching, 5" up

Industrial, Residential, Commercial

CALL 475-7631 x13ff

### LAWN MAINTENANCE

SNOW PLOWING

SMALL

LANDSCAPING

RICHARD SMITH

475-8984 after 5 p.m. x10ff

### LITTLE WACK EXCAVATING

Basement — Drainfields

Bulldozing — Digging

Snow Removal — Tree Removal

LICENSED AND INSURED

Paul Wackenhut

Ph. 428-8025 x52ff

### SNOW PLOWING

RESIDENTIAL OR COMMERCIAL

DUANE DORR

Phone 475-8365 x45

### Why hire THREE contractors when ONE will do?

HILLTOP, INC.

PLUMBING HEATING ELECTRICAL

WE DO IT ALL! Serving Washtenaw County for the 25th year.

475-2949 8316 Werkner - Chelsea x38ff

## Bus. Services 13

LEONARD REITH

Master Plumber

Licensed Electrician

Hot Water Heat

18238 N. Territorial Rd.

Chelsea, Mich. 48118

Phone: 475-2044 x52ff

### McCulloch

Portable Generators

Chain Saws

WE SELL, SERVICE SHARPEN AND TRADE

Chelsea Hardware

21ff

### Norval R. Menge

Builder

CUSTOM BUILT HOMES

ADDITIONS, REMODELING

GARAGES AND POLE BARN

We also do—

LIGHT HAULING

BACKHOE WORK

GENERAL REPAIRS

all our work fully guaranteed

CALL FOR FREE ESTIMATES

475-1005 x44ff

PIANO TUNING and repair. Qualified technician. Call Ron Harris, 475-7134. x10ff

PATCHING and PLASTERING. Call 475-7489. x33ff

PLUMBING by licensed master plumber. Quality work, reasonably priced. 24-hour service. Ph. 487-9842. x25ff

POURED BASEMENTS

Are Stronger and Faster

FOR FREE ESTIMATE CALL

WEBER HOMES

475-2828 475-1707 x8ff

### R. L. BAUER

Builders

LICENSED and INSURED

Custom Building

Houses — Garages

Pole Barns

Roofing — Siding

Concrete Work

FREE ESTIMATES

Call 475-1218 x31ff

### RON MONTANGE

CONSTRUCTION

(RJM, INC.)

—Full carpentry services

(rough and finish)

—Additions, remodeling and repairs

—Concrete

—Roofing and siding

—Cabinets and Formica work

—Metal farm buildings

—Excavating and trenching

QUALITY WORKMANSHIP

FREE ESTIMATES

Ph. 426-2585

or

475-1080 x19ff

### SNOW PLOWING

RESIDENTIAL OR COMMERCIAL

DUANE DORR

Phone 475-8365 x45

### Why hire THREE contractors when ONE will do?

HILLTOP, INC.

PLUMBING HEATING ELECTRICAL

WE DO IT ALL! Serving Washtenaw County for the 25th year.

475-2949 8316 Werkner - Chelsea x38ff

## Bus. Services 13

Window Screens

Repaired

Reasonable rates

Chelsea Hardware

1105. Main Ph. 475-1121 x30ff

### YOUR BEAUTY SALON

8066 Main St., Dexter

Ph. 426-8878

Men and Women hair styling, KMS, Wella Wella, Odyssey products. Professional hair piercing.

Also, we carry Aloe Vera Liquid and all related products.

BARB WITTMAN, Owner-Operator

Wendy (Alberts) McMichaels, stylist x6ff

## Financial 14

PRIVATE PARTY. Purchasers land contracts and mortgages. Eves. only 475-1469. x21ff

LAND CONTRACTS PURCHASED — Any size, any property type. Courteous and reliable service. Call Dan Duncan, Ann Arbor Real Estate Co., 668-8595. x33ff

## Bus. Opportunity 15

OWN YOUR OWN Jean Shop; go direct—no middle man, no salesman's fee. Offering all the nationally known brands such as Jordache, Vanderbilt, Calvin Klein, Saddlefield, Levi and over 70 other brands. \$15,500.00 includes beginning inventory, airfare for 1 to our national warehouse, training, fixtures and Grand Opening Promotions. Call Mr. Kosteky at Mademoiselle Fashions 612-432-0676. x39

## Card of Thanks 16



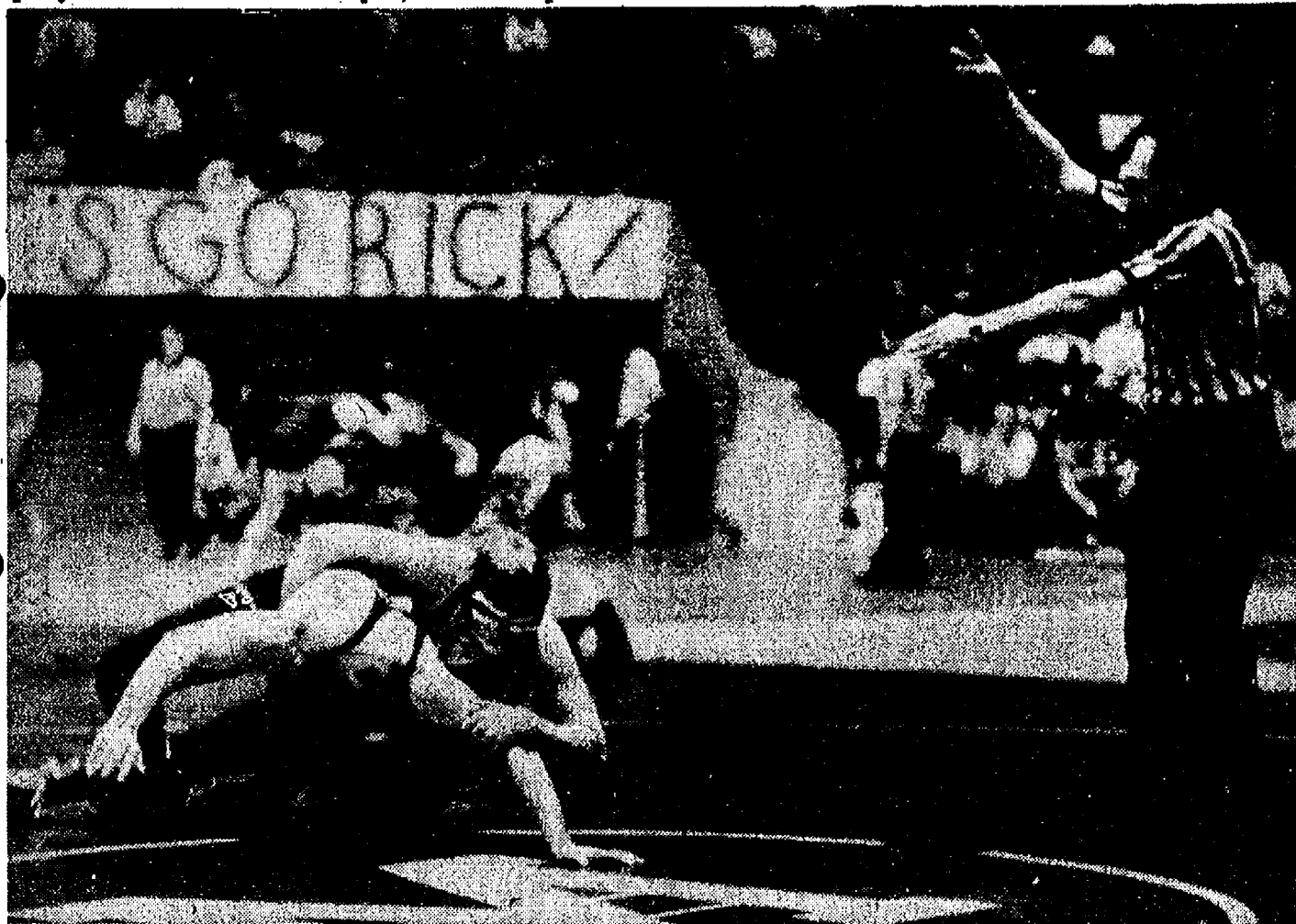






WITH A FIGURE FOUR, Jeff Osentoski attempts to stack his opponent while a referee observes the skillful technicalities. In the company of teammate Rick Poljan, Osentoski placed

fourth over-all in the state in the 112-lbs. weight classification while his cohort finished in the same position at 198 lbs.



TWO POINTS FOR A TAKE DOWN: Chelsea's Rick Poljan is awarded two points by downing one of his opponents during the 1981 state wrestling meet, Friday and Saturday, Feb. 27 and

28. Following two days of grappling, Poljan emerged as fourth best in the state in the 198-lb. weight class.



JEFF OSENTOSKI attempts to pin his opponent enroute to a fourth-place finish in the state during the 1981 state wrestling championships held Friday and Saturday, Feb. 27 and 28 at Ann

Arbor's Crisler Arena. A total of 10 wrestlers in each weight class and more than 250 wrestlers over-all competed in the two-day competition.

## ANNUAL REPORT McKUNE MEMORIAL LIBRARY

February 1, 1980 to January 31, 1981

Balance February 1, 1980 .....\$ 9,713.08

### RECEIPTS—

Village Taxes .....	\$31,595.71
Townships .....	3,741.08
State and County .....	7,809.98
Book Fund .....	710.85
Copier .....	\$97.73
Fines .....	1,589.17
Gifts .....	221.00
Misc. ....	167.20

Total .....\$46,720.88 \$46,720.88

Total .....

### DISBURSEMENTS—

Salaries .....	\$18,152.42
Books .....	6,938.44
Magazines .....	347.18
Records .....	136.86
Binding .....	252.93
Library Supplies .....	715.24
Utilities .....	2,922.20
Cleaning Supplies .....	177.13
Maintenance (Bldg.) .....	3,457.07
County .....	1,018.75
Furniture .....	481.84
Petty Cash .....	206.87
Transferred to Building Fund ....	18,646.81

Total .....\$55,792.66 \$55,792.66

Balance January 31, 1981 .....\$ 641.30

## ANNUAL REPORT McKUNE MEMORIAL LIBRARY

February 1, 1980 to January 31, 1981

CIRCULATION .....37,178

Books Loaned .....	33,795
Adult .....	20,361
Juvenile .....	13,434
Magazines Loaned .....	2,014
Records Loaned .....	1,054
Puzzles Loaned .....	167
Films Loaned .....	148

### INVENTORY—

Books Added .....	1,045
Adult .....	825
Juvenile .....	230
Books Withdrawn .....	481
Lost (Adult - 31, Juvenile - 18) .....	49
Discarded (Adult - 313, Juvenile - 119) .....	432
Total Number of Books .....	22,540
Adult .....	15,841
Juvenile .....	6,699
Records Added .....	18
Adult .....	4
Juvenile .....	14
Records Withdrawn .....	11
Lost (Adult - 0, Juvenile - 2) .....	2
Records Discarded (Adult - 1, Juvenile - 8) .....	9
Total Number of Records .....	452
Adult .....	322
Juvenile .....	130
Total Number of Puzzles .....	87
Total Number of Magazines by Subscription .....	39
Total Number of Newspapers .....	2

### SPECIAL COLLECTIONS

Listening Library .....	16
Books in Large Print .....	61
Memorial Books .....	1,133
Michigan Historical Books .....	157
Chelsea Standards Bound .....	91
Great Art Reprints .....	1,664
Cemetery File Listings .....	49,400
Chelsea Standards on Microfilm .....	40
REGISTERED BORROWERS .....	3,440
New Registrations .....	818
Village Residents Registered .....	1,400
Participating Township Residents .....	1,913
Non Residents .....	14
Systems .....	113

Subscribe today to The Standard.

## ROBERTS PAINT & BODY



"We do our best to satisfy"

20416 Old US-12 West  
Chelsea, Mich.

Ph. 475-1149

Open 8 a.m.-5 p.m. Daily

Tell Them You Read It  
In The Standard!

Sat., March 7 thru Sat., March 14

**15% off**  
**Everything**  
**Sale**  
**SHADES**  
**FINIALS**  
**REPAIRS**  
**GLASS PARTS**  
**RECOVERING**  
**SELECTED**  
**SHADES: 50%**

OPEN

SUNDAY

MARCH 8

11 to 4

**TOP OF THE LAMP**

217 North Main Street  
Ann Arbor, Michigan

769-7019

## VILLAGE ELECTION

To the Qualified Electors:  
NOTICE IS HEREBY GIVEN, That an Annual Village Election will be held in the  
**VILLAGE OF CHELSEA**

State of Michigan

— at —

**SYLVAN TOWNSHIP HALL**

112 W. Middle St.

Within said Village on

**Monday, March 9, 1981**

FOR THE PURPOSE OF VOTING FOR THE ELECTION OF THE FOLLOWING OFFICERS, VIZ:

Three (3) Trustees  
One (1) Village Clerk  
Two (2) Library Board Trustees

Notice Relative to Opening & Closing of Polls

ELECTION LAW, ACT 116, P. A. 1964

SECTION 720. On the day of any election, the polls shall be opened at 7 o'clock in the forenoon, and shall be continuously open until 8 o'clock in the afternoon and no longer. Every qualified elector present and in line at the polls at the hour prescribed for the closing thereof shall be allowed to vote.

The POLLS of said election will be open at 7 o'clock a.m. and will remain open until 8 o'clock p.m. of said day of election.

ROSE M. McGIBNEY, Village Clerk

## Swim Team Wins

(Continued from page nine)

100 breaststroke results found Dave Nicola third at 1:06.7, Shawn Pierson, fifth at 1:08.5, Craig Wirtz, seventh at 1:09.3 and others with tremendous time drops were Ted Merkel at 1:15.1 and Steve Wolak at 1:18.3.

The 400 free relay results found Tom Gaunt in first place with John Hoffman, Sean Oxner and Phil Hoffman at 3:31.4, a meet record and state qualifying time while Kent Noll, Wayne Smith, Kevin Colombo and Paul Schumann finished ninth at 3:56.6.

Chelsea now has qualified for state both relays, two in the 200

free, three in the 200 IM, three in the 50 free, two in diving, two in butterfly, three in the 100 free, three in the 500 free and two in the backstroke. In total 14 of Chelsea's 24 swimmers are going to the state meet.

The Chelsea team record has now been stretched to 13 wins and no losses. The team is unbeaten in 24 meets and unbeaten at home in three years. As a result of fine swimming efforts, Chelsea has emerged as the Chelsea Invitational champion, ready to compete in the State Meet, March 13 and 14.

**FEED FOR PROFIT**

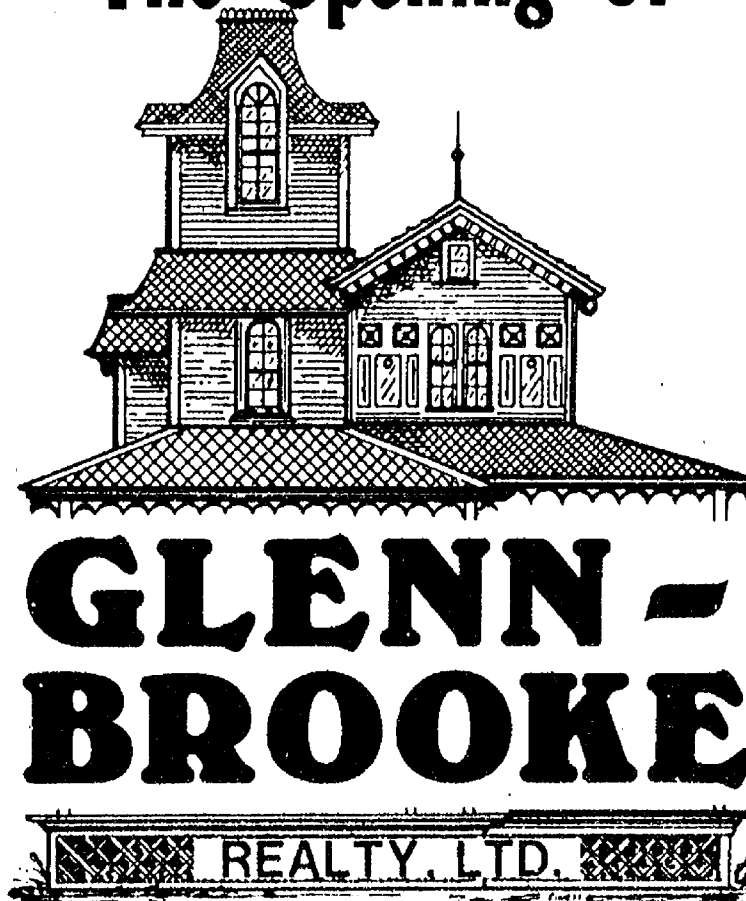
See us for feed needs!

**Feed Formulas Tested, Proved To Get Results**

Extra proteins, vitamins and minerals in proper balance, scientifically blended, make our feeds real profit producers for you.

**Farmers' Supply Co.**  
Phone 475-1777

We Are Proud To Announce  
The Opening of



**GLENN-BROOKE**  
REALTY, LTD.

515 W. Main St.

Stockbridge, Mich.

For Your TOTAL Real Estate Needs,  
Call Us Today!

**NATHAN GLENN**  
ASSOCIATE BROKER

**DEBORAH MARSHALL**  
ASSOCIATE BROKER

**KRISTEN HARTSUFF**  
SALES ASSOCIATE

**DUANE GLENN**  
SALES ASSOCIATE

517 **851-7568**



## DEATHS

### Mrs. M. Kirshman

Chelsea Woman's Mother Dies at Area Nursing Home Mrs. Marion E. Kirshman, formerly of Dexter and Fenton, died Saturday, Feb. 28 at Whitehall Convalescent Home, Ann Arbor. She was 83.

She was born Nov. 27, 1897 in West Sparta, N. Y., the daughter of George and Francena Coe Robards. She had been a resident of the Ann Arbor-Dexter area for more than 60 years.

Mrs. Kirshman is survived by two sons, Clarence C. Hanselman and Wilbur E. Hanselman, both of Dexter; five sisters, Mrs. Marjorie Parker of Dexter, Mrs. Ethel Walz of Chelsea, Mrs. Carabell Glenn of Stockbridge, Mrs. Georgia Gauss of Ann Arbor and Mrs. Eleanor Payne of Holt; one granddaughter; one grandson; eight great-grandchildren; one great-great-granddaughter; and several nieces and nephews. She was preceded in death by a granddaughter and three brothers, James, Chester and Glen Robards.

Funeral services will be held Tuesday, March 3 at 2 p.m. at the Horner Funeral Home with the Rev. Robert Weikart officiating. Interment will follow at Forest Lawn Cemetery.

Memorial contributions may be made, in Mrs. Kirshman's name, to the organization of your choice.

### Births

A son, Steven Carroll, Thursday, Feb. 19 at University Hospital, Ann Arbor, to Jon and Janet Tarolli, 1275 S. Fletcher Rd., Chelsea. Maternal grandparents are Harold and Anne Holland of Ann Arbor. Paternal grandparents are Carroll and Irelia Tarolli of Owosso.

A daughter, Louisa Anne, to Gregory and Monica Hubbard, 2400 Lima Center Rd., Feb. 19 at St. Joseph Mercy Hospital, Ann Arbor.

### Girls Scouts Make Puppets

Girl Scout Troop 58 started working in November on their puppets for the children at Mott Hospital. Four different puppets—frog, hippo, giraffe, shark—were designed with each girl doing all the work on her chosen mammal.

Not only did the troop enjoy their 1980-81 service project but also, each girl became acquainted with the fundamentals of sewing—pattern tracing, cutting, piecing together and finally, sewing the finished product.

Last week, the puppets were transported to Mott Hospital by their creators and distributed. While at the hospital, the troop was given a tour and the girls viewed a film strip on what to expect in case of hospitalization.



**FARMER'S NIGHT:** Reuben Lesser, Sr., his son, Reuben Lesser, Jr., Ralph Kirch, Michigan Department of Agriculture Director of Fairs and Racing and Herman Koenn, Kiwanis Club president, pause briefly at the festivities in honor of more than 250 local farmers Monday evening,

Feb. 23. Reuben Lesser, Sr. was the recipient of the 1980 Kiwanis Farmer's Service Award, this year bestowed upon Sylvester Weber for his numerous contributions to farming and the community.

### SCHOOL LUNCH MENU

Weeks of March 3-16\*

Tuesday—Ham and cheese sandwich, French fries, whole kernel corn, chocolate pudding, milk.

Wednesday—Home-made lasagne, broccoli, chilled crushed pineapple, warm French bread, milk.

Thursday—Roast turkey with dressing, green beans, fresh orange, bread and butter, pumpkin pie, milk.

Friday—Cheese and sausage pizza, carrot and celery sticks with vegetable dip, cinnamon applesauce, ranger cookie, milk.

Monday—Vegetable soup, submarine sandwich, dill pickles, lettuce salad with dressing, pineapple tidbits, milk.

Tuesday—Baked chicken, whipped potatoes with gravy, mixed vegetables, bread and butter, chocolate eclair, milk.

Wednesday—Chili dog on a bun, assorted relishes, fresh fruit, chocolate chip cookie, milk.

Thursday—Hamburger on a bun, cheese and lettuce garnish, oven fries, tossed salad with dressing, fresh fruit, milk.

Friday—Hot waffle with syrup, sausage patties, orange juice, chilled fruit cocktail, milk.

Monday—Cheese pizza, vegetable munchies, cinnamon applesauce, sugar cookie, milk.

\*All menus subject to change without notice.

### Farm Leader Calls for Lifting Grain Embargo

Elton R. Smith, president of Michigan Farm Bureau, told participants in a state-wide commodity meeting this week that President Reagan should either lift the grain embargo or expand it to all exports to the Soviet Union.

### Four Bulldog Cagers Gain Conference Honors

Members of the 1981 Southeastern Conference All-League teams and players receiving honorable mention were made public Monday, March 2. A total of four Chelsea cagers were given honors for their contributions to the 1980-81 Bulldog team which finished second in the SEC with a conference record of 8-4.

The first all-league team is made up of three unanimously selected conference cagers including Sam Pope and John Gruden of Milan and Jeff Dils of Chelsea. Pope, a 5'10", 155 lb. senior and Gruden, a 6'3", 175 lb. senior have been the driving force for the 1980-81 conference title-holding Big Reds. Chelsea's Dils at 6', 180 lbs. has led his team to a second place finish this season while hitting in excess of 1,000 career points during three regular seasons of basketball.

### World Day of Prayer Service Set for Friday

World Day of Prayer will be celebrated in Chelsea on Friday, March 6 at the First Congregational church. A White Breakfast will begin the services at 9:30, followed by the program, "The Earth is the Lord's." Both men and women are invited to attend and child care will be provided.

World Day of Prayer is an occasion for Christians all over the world to give thanks together for the goodness of the Earth and its resources, for the goodness of God who created and sustains the Earth and "fills every living creature with blessing," and to worship with one heart and one mind.

The theme, "The Earth is the Lord's," is special to Michigan and to the United States; the service was written and prepared by Christian native American women from six tribes.

Speaking of his personal experiences, Domingo Hermsillo, a local Mexican Indian, will discuss his concerns for the American Indian and the Earth we share. Marcia Little will provide special music.

World Day of Prayer dates back to 1887 and is sponsored in 150 countries by Church Women United. This ecumenical group invites all Christians.

### Senior Citizen Nutrition Program MENU and ACTIVITIES

Week of March 4-10  
Wednesday—Baked liver and onions, Mexican corn, strawberry and banana mold, white bread with butter, peanut butter cookies. Creative expression, 9:45 a.m.

Thursday—Cornflake crumb chicken, mashed sweet potatoes, Waldorf salad, wheat bread with butter, cake. Senior fitness, 11 a.m.

Friday—Meatballs, baked potatoes, stewed tomatoes, corn bread with butter, fruit tapoca. "Bible as History and Literature," 11 a.m.

Monday—Chicken pasties with gravy, peas and carrots, tossed salad, white bread with butter,

## Three Arrested on B & E at Scio Farm

Washtenaw County Sheriff's Department made three arrests and confiscated more than \$6,000 in stolen antiques from a Taylor garage Monday, Feb. 23, following a series of break-ins at a Scio township farm located on Park and Staebler Rds.

Arrested and charged with breaking and entering were William Gates, 43, Chuck Fields, 33, and John Sanders, 27, all of Taylor. Arraigned in 14th District Court Friday, cash security bond was set at \$10,000, \$20,000 and \$5,000, respectively.

According to Detective Paul Wade, the owner of the farm house has another residence in Barton Hills and is restoring the Scio township farm where the antiques were stored. On Sunday, Feb. 22, a neighbor to the farm, spotted a suspicious vehicle in the driveway and notified authorities. The car was traced to Taylor.

Washtenaw County Sheriff's deputies set up surveillance of the farm in hopes of apprehending the suspects but they did not return to pick up the merchandise, some of which had been

taken from the house and left on the lawn.

Without enough evidence to obtain a search warrant, Deputies Joe Marshall and Susie Anderson and Detective Wade, posed as antique dealers and made contact with the Taylor residence. They inquired about alleged antiques for sale. The trio was invited to the home and taken into the garage where the valuables were being stored. There, an arrest was made and later, the suspect arrested made a statement implicating others in the breaking and entering.

## Fraternity Gift to EMU in Memory of Auto Crash Victims

The Eastern Michigan University Board of Regents accepted \$156,284 in gifts and bequests for November and December 1980 at its regular monthly meeting held Wednesday, Feb. 25.

Among the gifts accepted by the EMU Regents was a \$1,243 bequest given to the University by the campus chapter of the Lambda Chi Alpha fraternity in memory of three of its members—William Calcutt, David Morehouse and Mark Arsenault—who died in a head-on traffic accident last November. A senior at EMU, Calcutt was a resident of Dexter. The gift is to be used for beautification of the grounds

### Jeff Dils Named DAR Good Citizen

Chelsea High school senior Jeff Dils was among eight area high school students honored Saturday during Good Citizen Day by the Sarah Caswell Angell Chapter of the Daughters of the American Revolution.

Selected by classmates, Good Citizens are chosen on the basis of their leadership, dependability, service and patriotism. At the DAR meeting at Ann Arbor's Bentley Library, each of the eight students was the recipient of a pin and certificate.

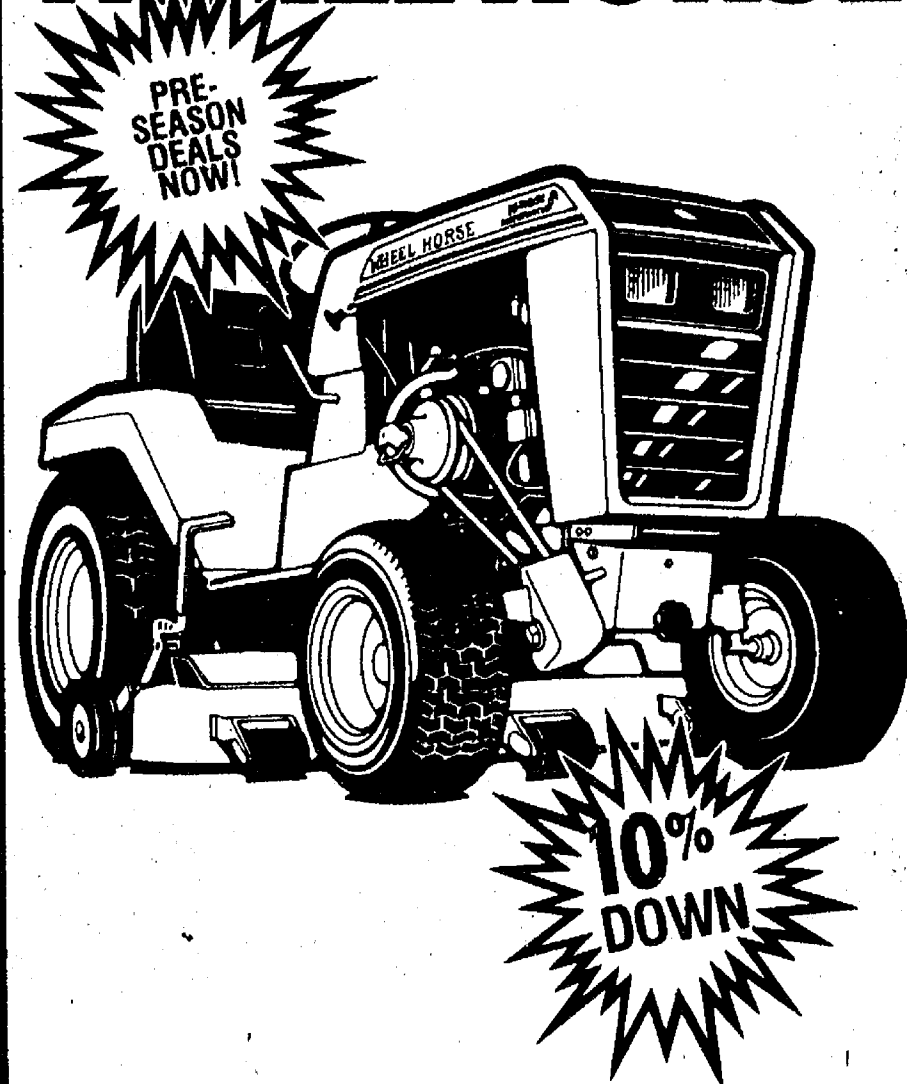
Other students honored as Good Citizens were Linda Carrigan of Ann Arbor Pioneer High school, Mary Ann Collins of Milan High school, Laurie Fitzgerald of Manchester High school, Ruth O'Neill of Ann Arbor Gabriel Richard High school, Connie Schuerman of Whitmore Lake High school, Ann Marie Sutherland of Huron High school and Janie Walsh of Dexter High school.

### Local Pastor's Mother Dies in Canada

Mrs. Tella Thodeson, mother of Pastor T. B. Thodeson, died at Oliver, British Columbia, Saturday, Jan. 31 following several months of illness. She was 89.

Mrs. Thodeson is survived by nine sons and daughters, including the Rev. Thodeson of Chelsea and Esther Collins of Canton Center. Her other children are residents of the West Coast.

## LAY AWAY A WHEEL HORSE



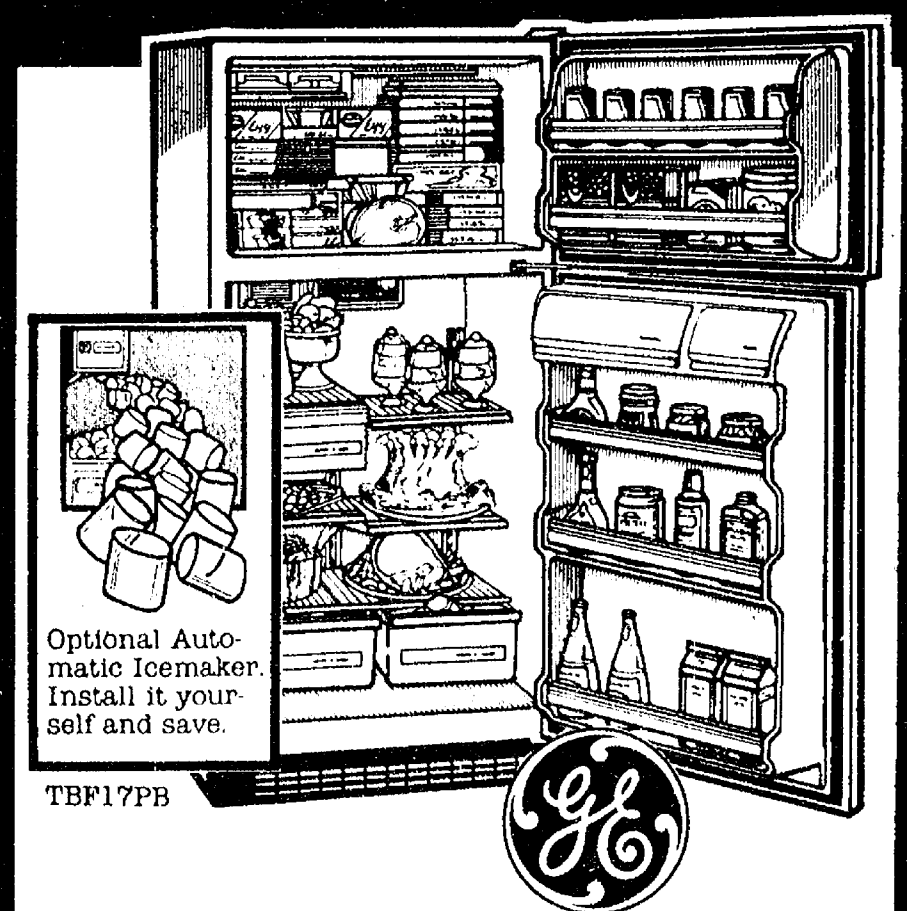
GO

**GAMBLES**

110 N. Main, Chelsea Ph. 475-7472

**WHEEL HORSE**  
lawn & garden tractors

## Low Operating Cost!



**17.2 cu. ft. No-frost refrigerator.**

Energy Saver switch in "normal" position helps cut operating cost. 4 adjustable split-level shelves. Twin vegetable, fruit pans. Covered meat pan. Dual temperature controls. 4.73 cu. ft. freezer. Rolls out on adjustable wheels. 30 1/2" wide, 64" high.

**NOW ONLY \$599<sup>95</sup>**

**HEYDLAUFF'S**  
113 N. Main St. Ph. 475-1221

## Schumm's

"Fine Dining at Modest Prices"

1620 M-52, Chelsea

Ph. 475-2020



**In Our Cocktail Lounge from 3 p.m. to closing Monday thru Sunday**

Select combinations from Cheese, Pepperoni, Sausage, Ham, Mushrooms, Onions, Green Pepper, Olives.

SOUPS & SANDWICHES SERVED NIGHTLY

## POCO LOCO NIGHT!

ALL THE TACOS YOU CAN HANDLE—\$1.95!  
MEXICAN FOOD!  
LATIN LIBATIONS!  
MUSIC & MORE MUSIC  
WEDNESDAYS 6 PM to 12  
AT WINSTON'S PUB  
(And there's Lotsa Pasta every Thursday night!)

**Schuler's**

So many different ways to make you welcome!  
ANN ARBOR  
3600 Plymouth Rd. • 769-9400